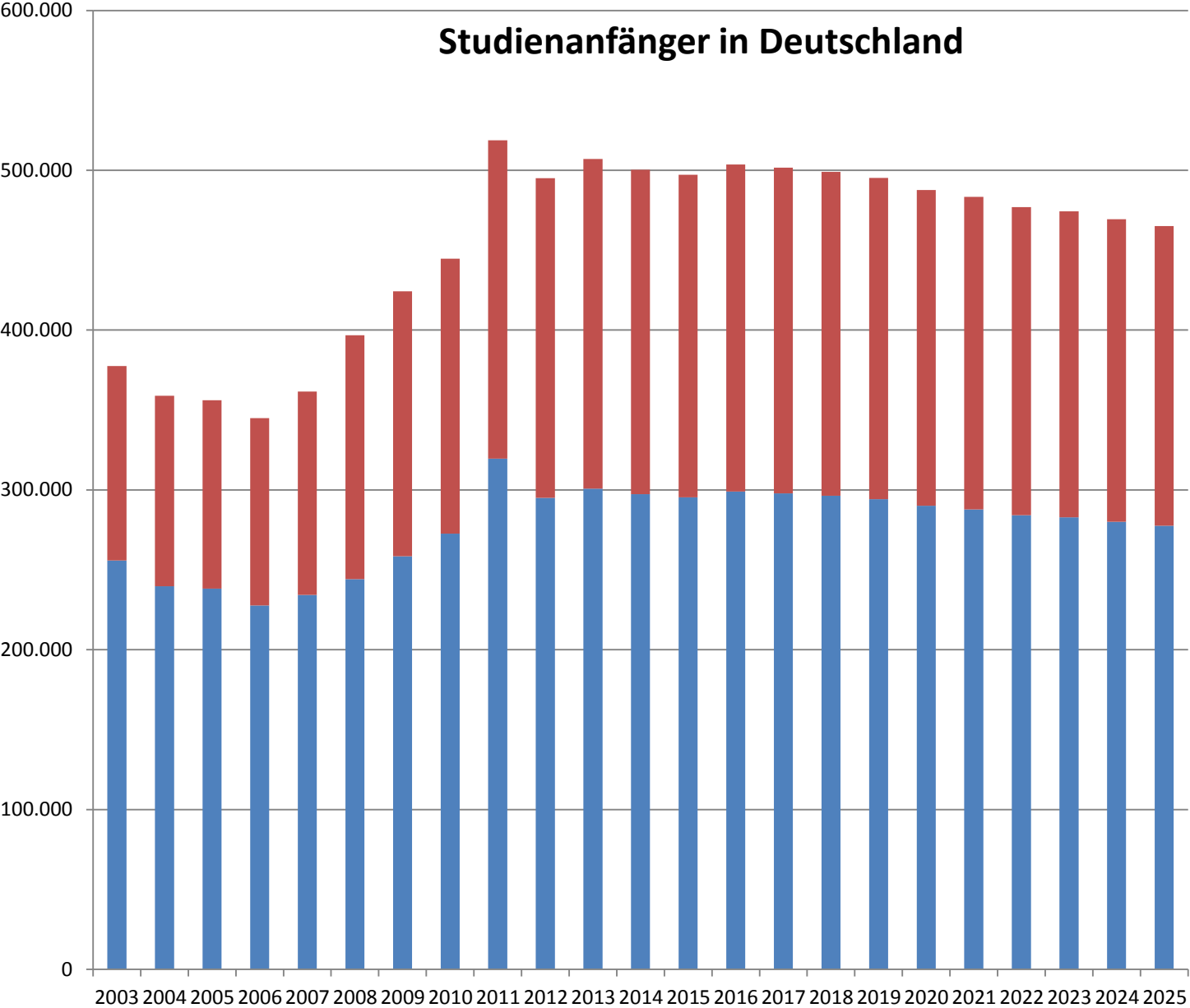
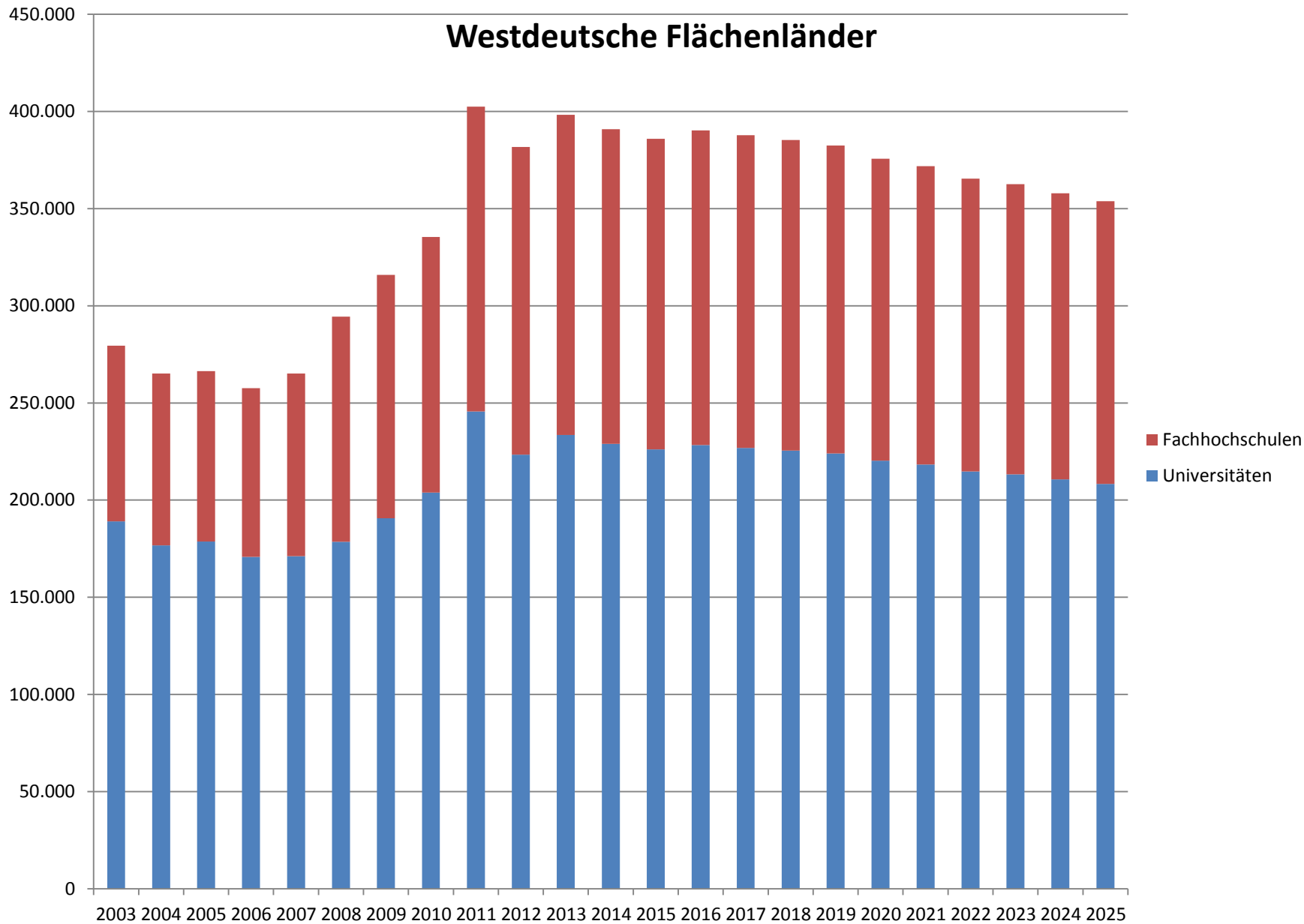


Grafikanhang zur
Vorausberechnung der Studienanfängerzahlen
2014 - 2025

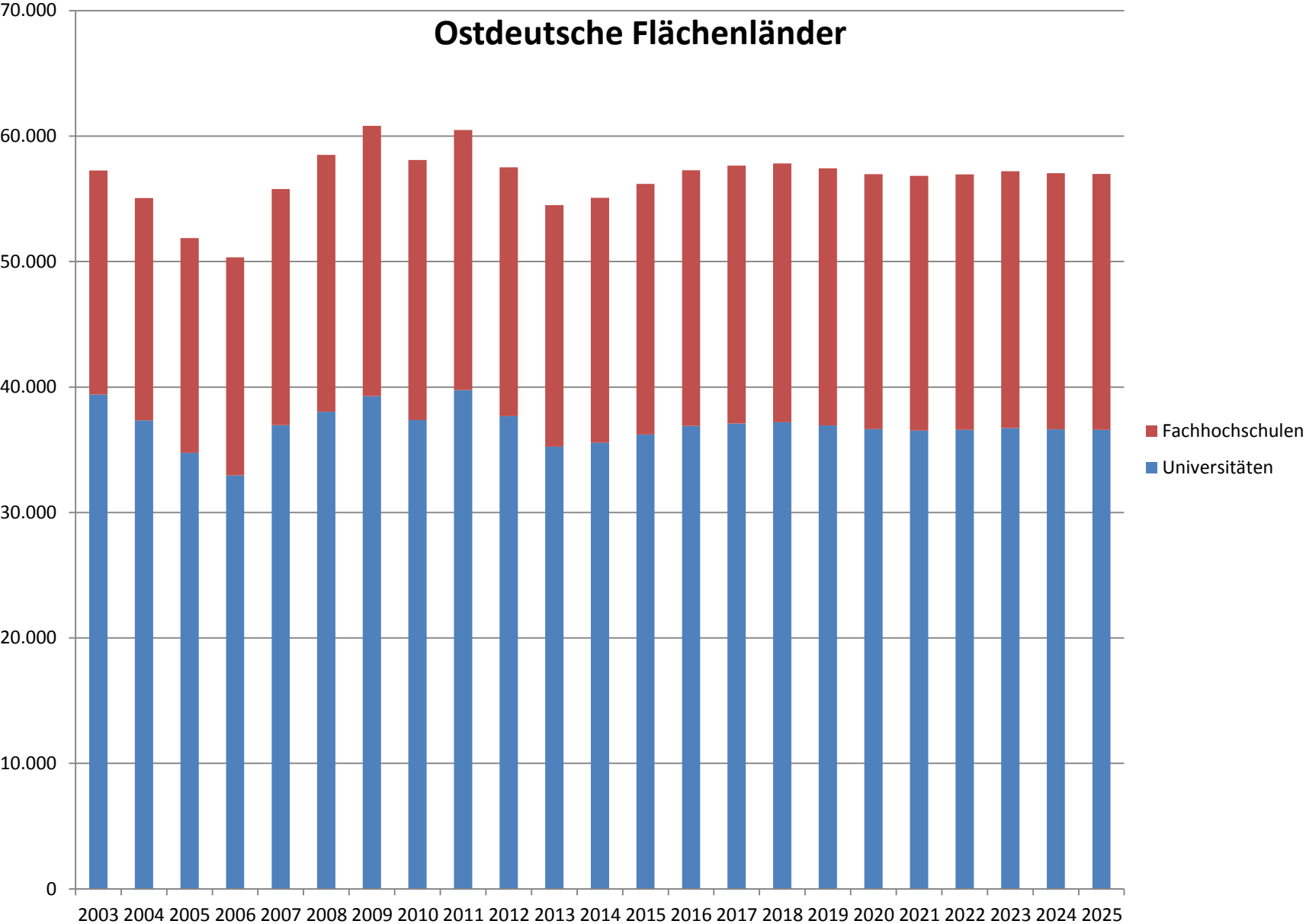
Studienanfänger in Deutschland



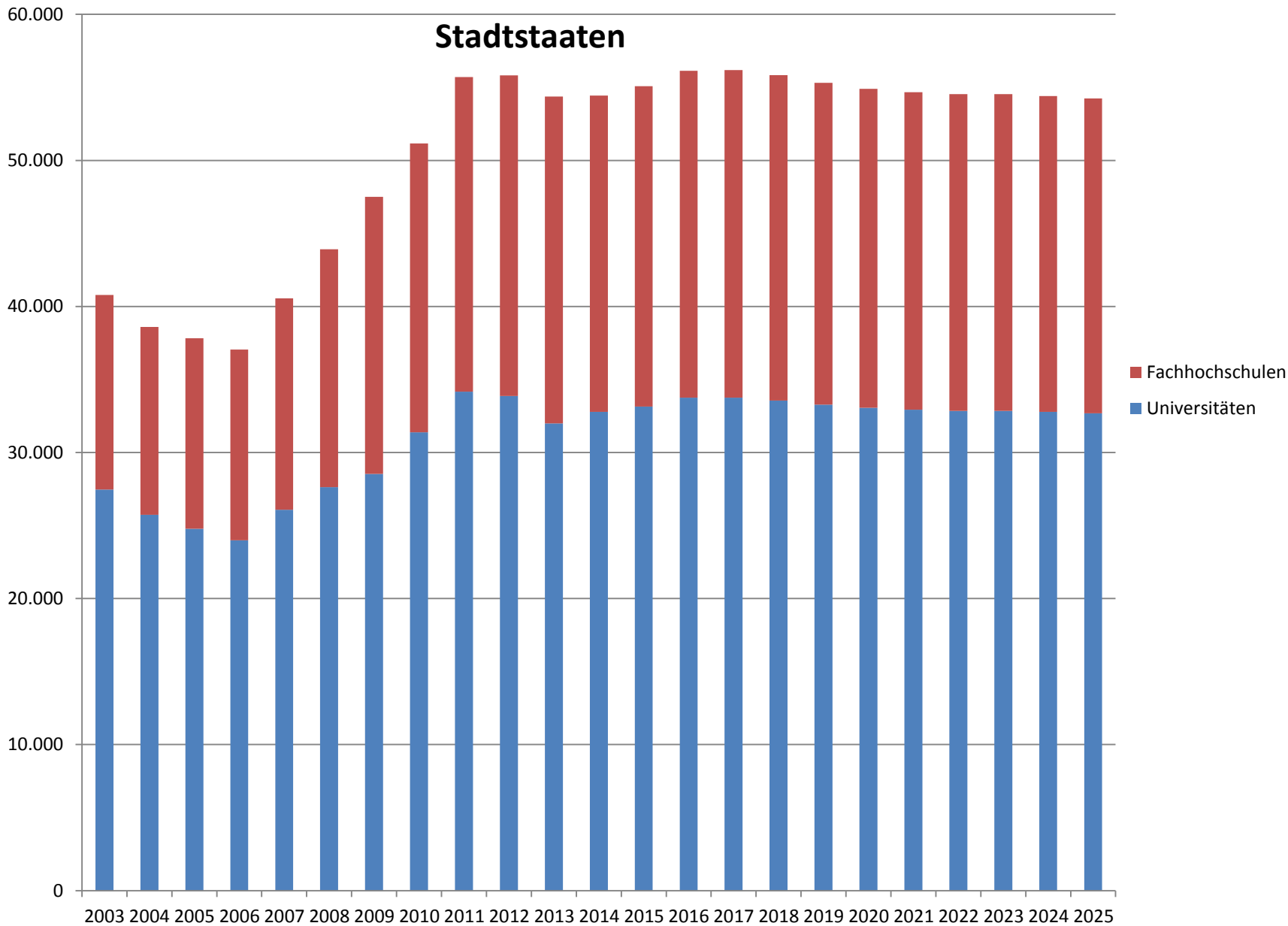
Westdeutsche Flächenländer



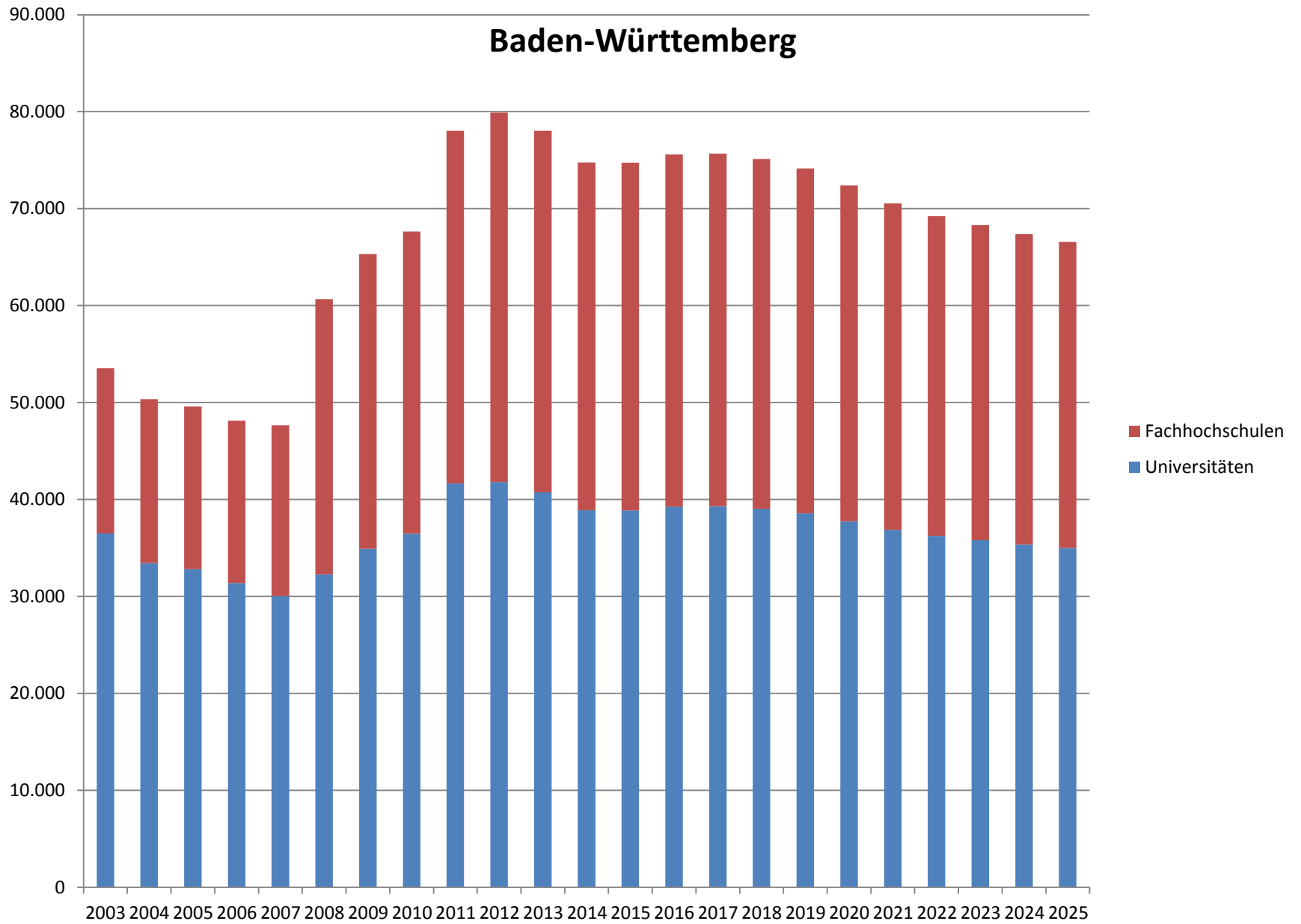
Ostdeutsche Flächenländer



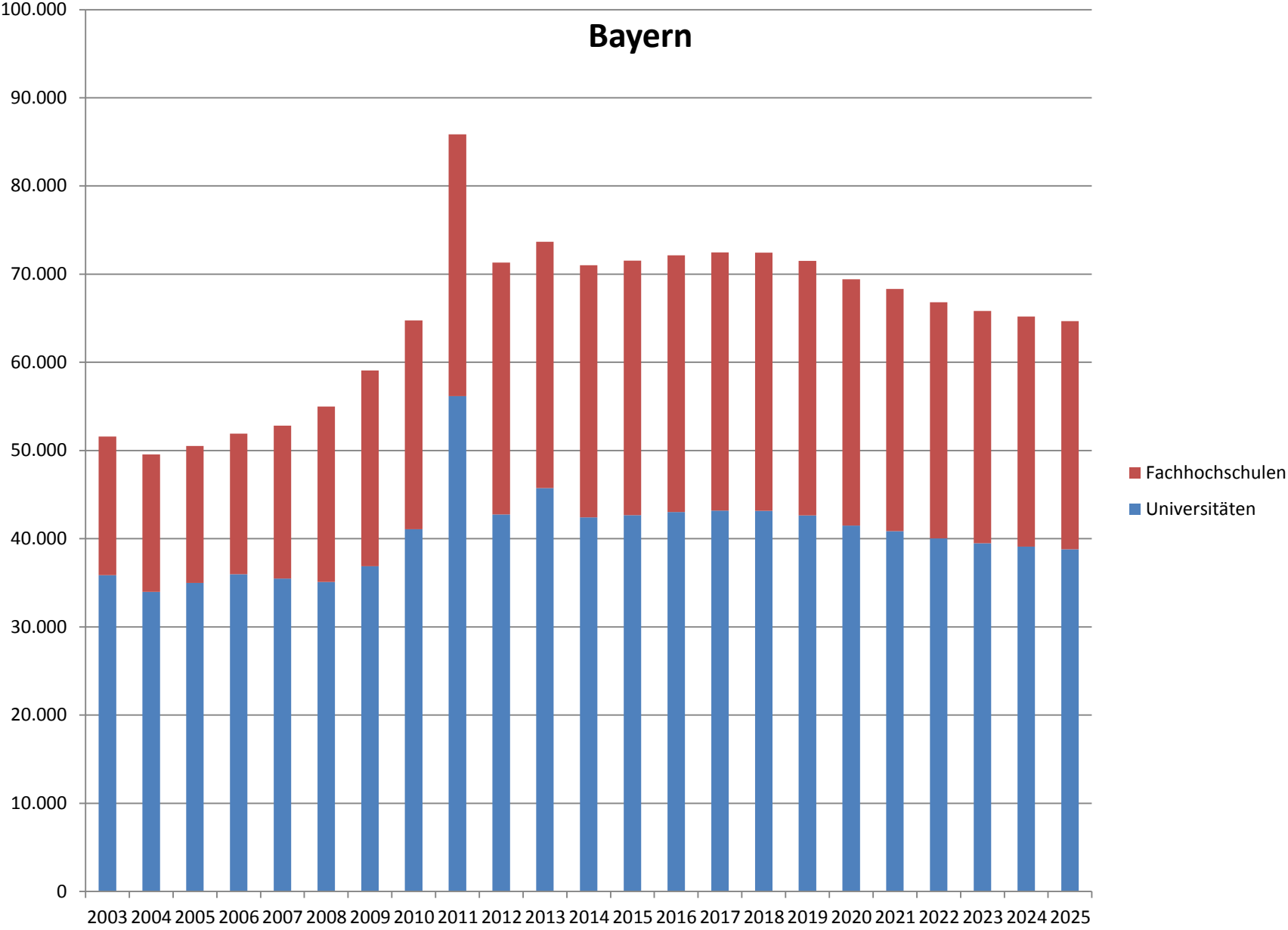
Stadtstaaten



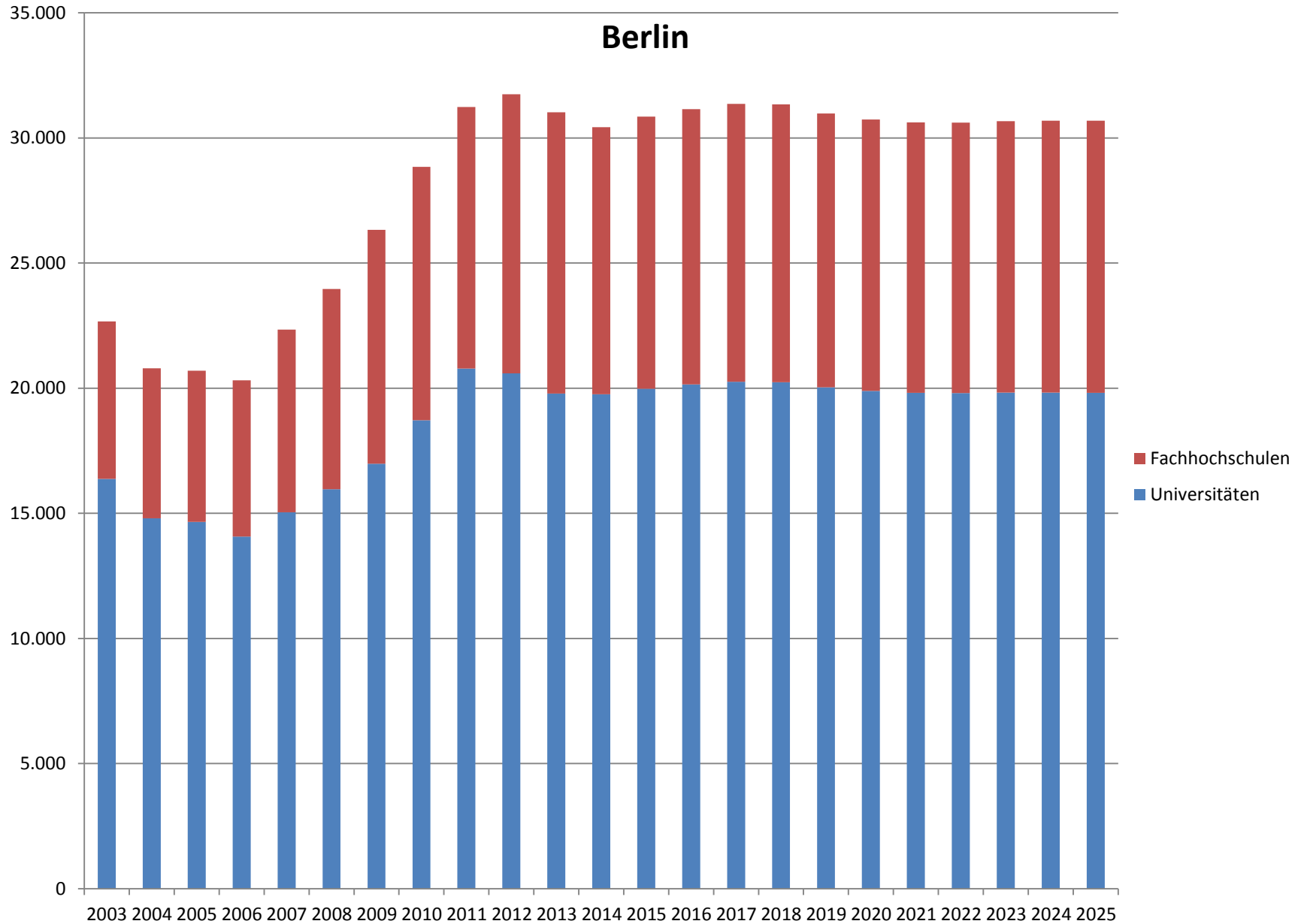
Baden-Württemberg



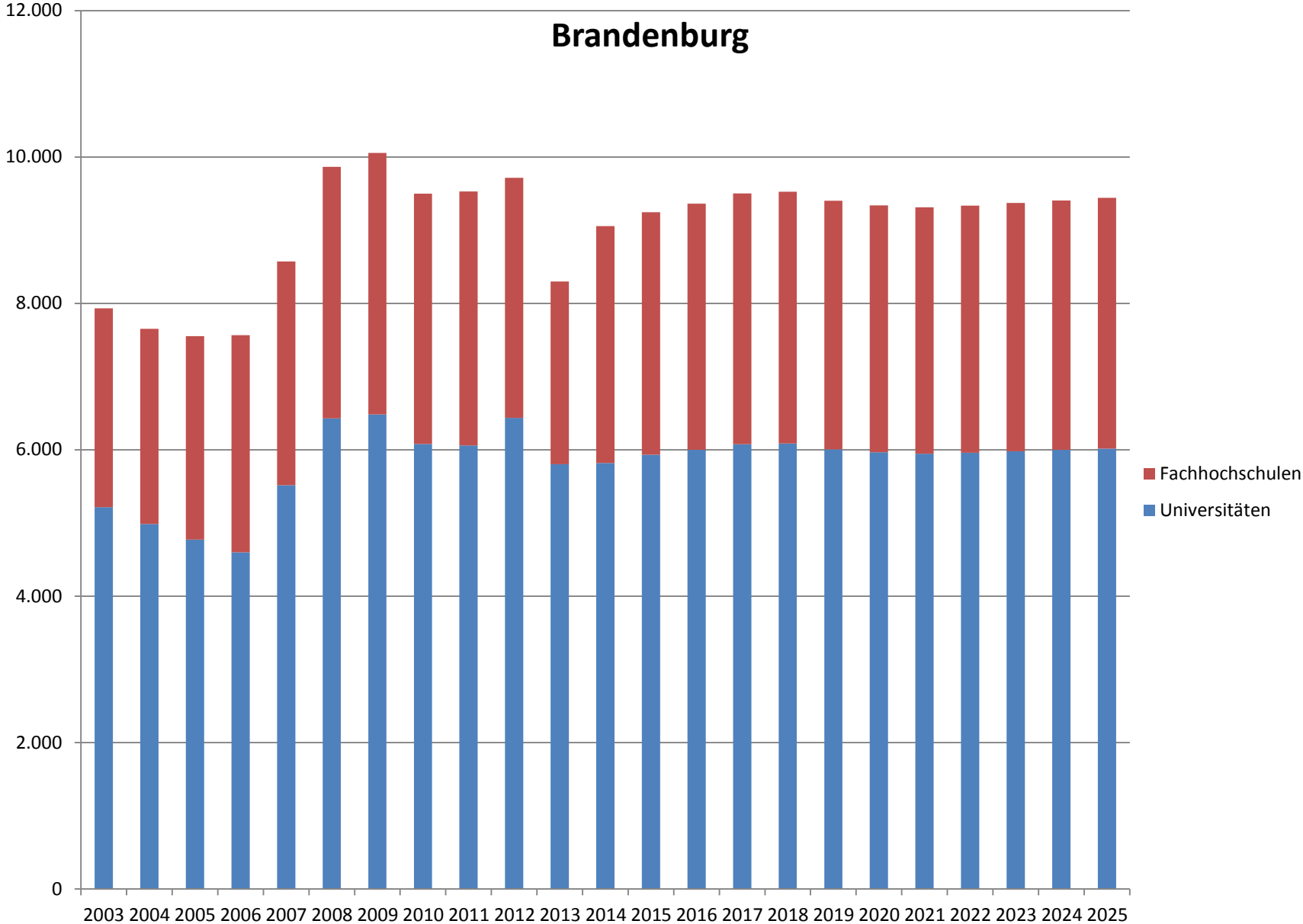
Bayern



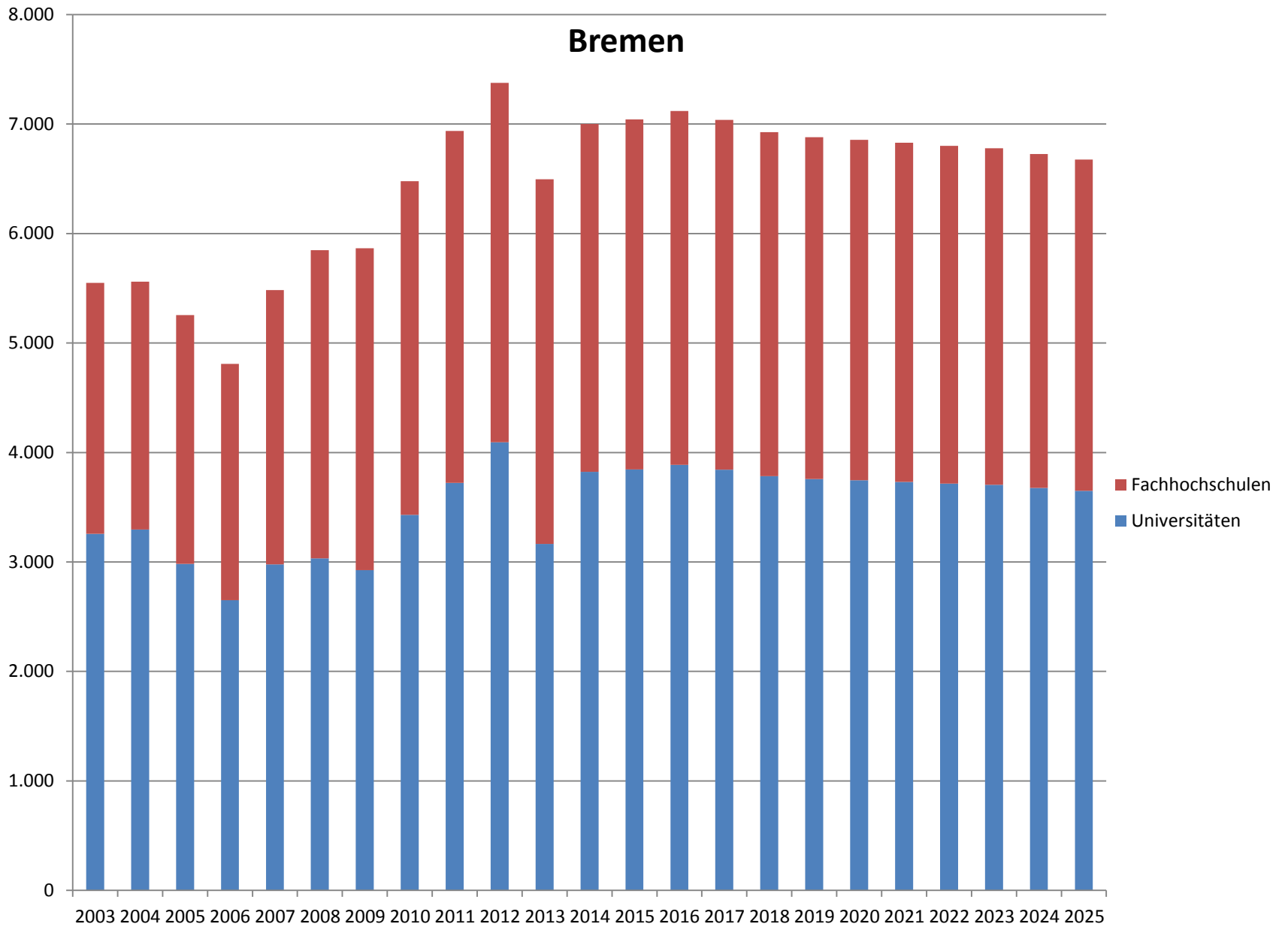
Berlin



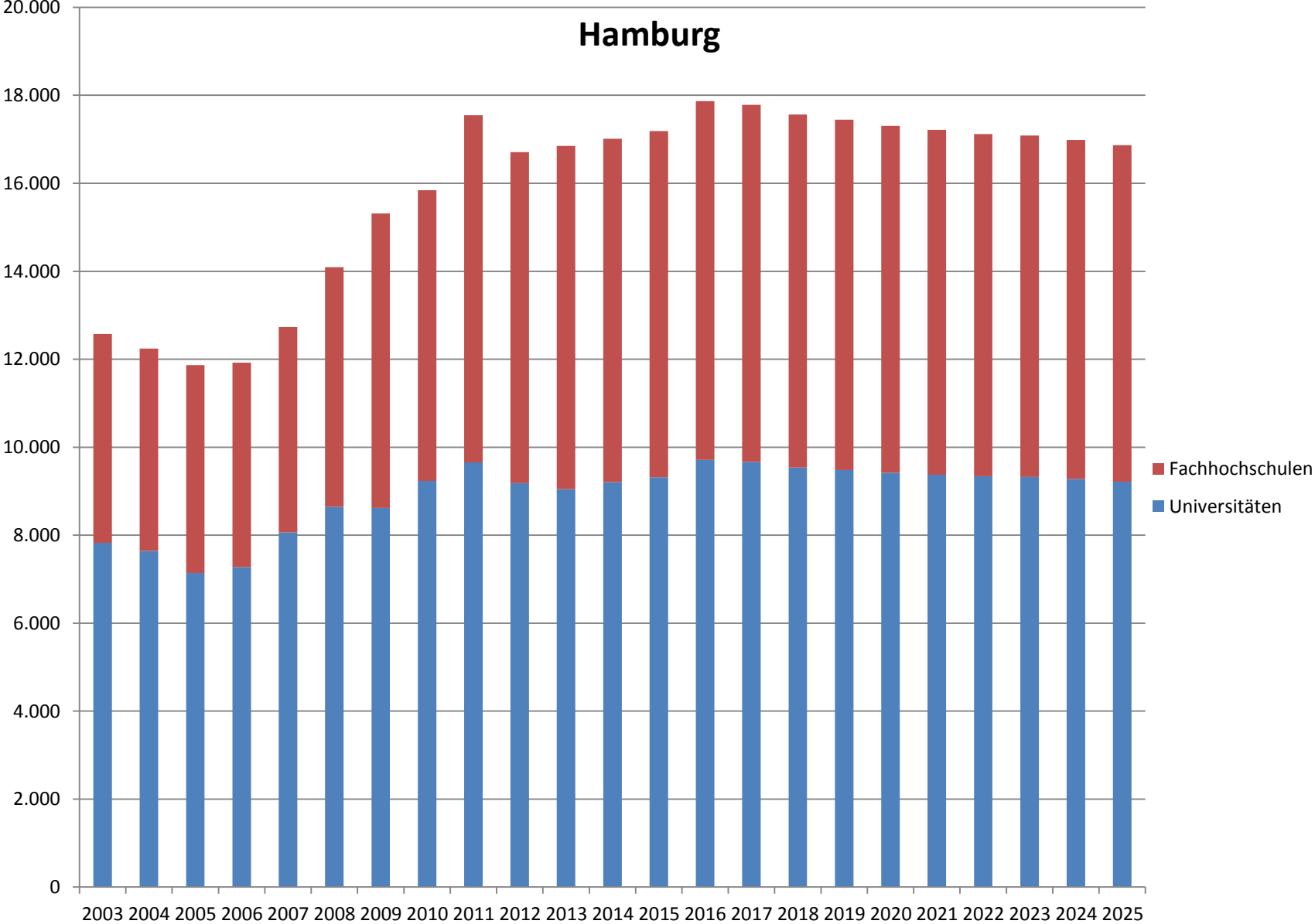
Brandenburg



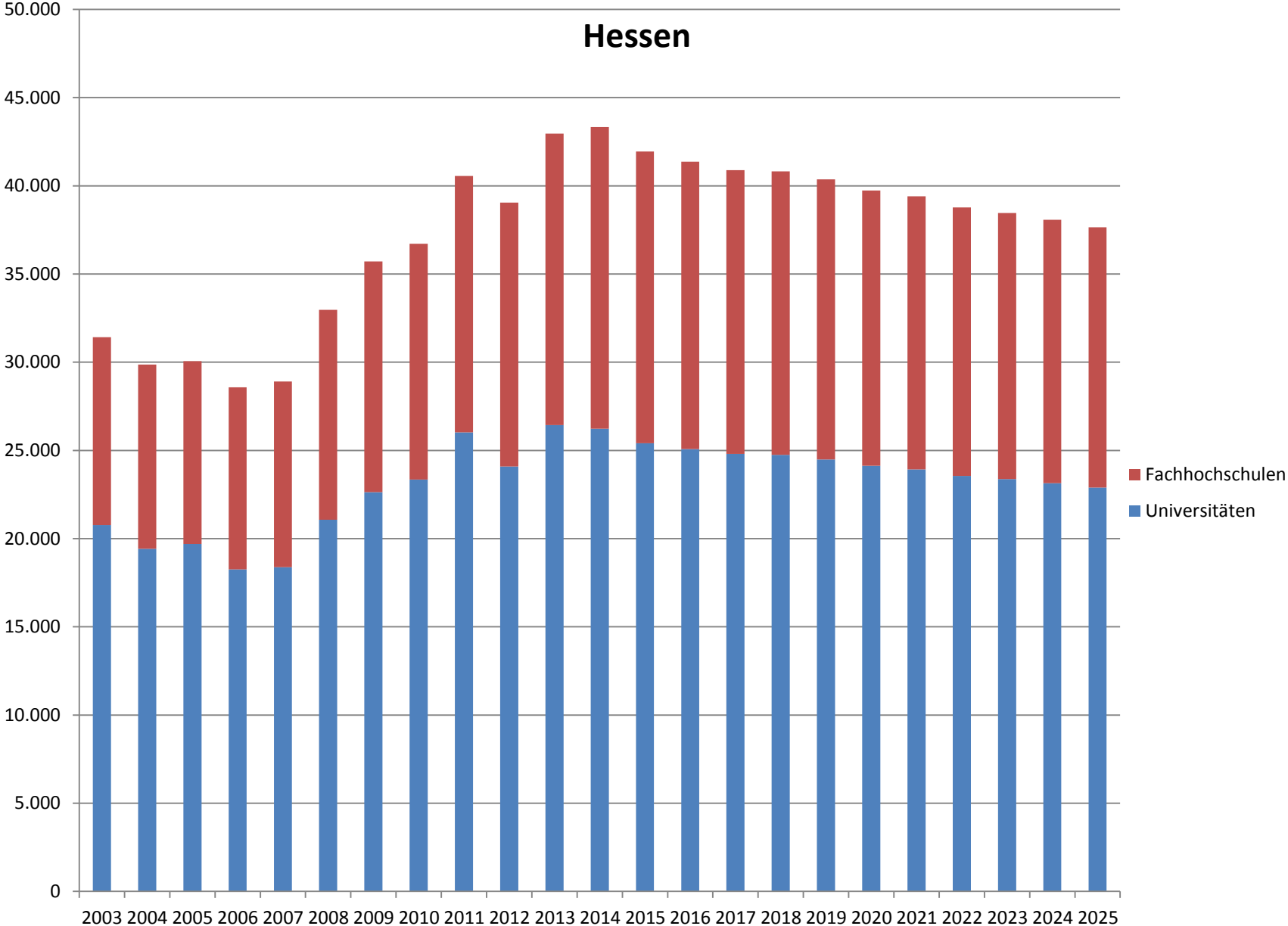
Bremen



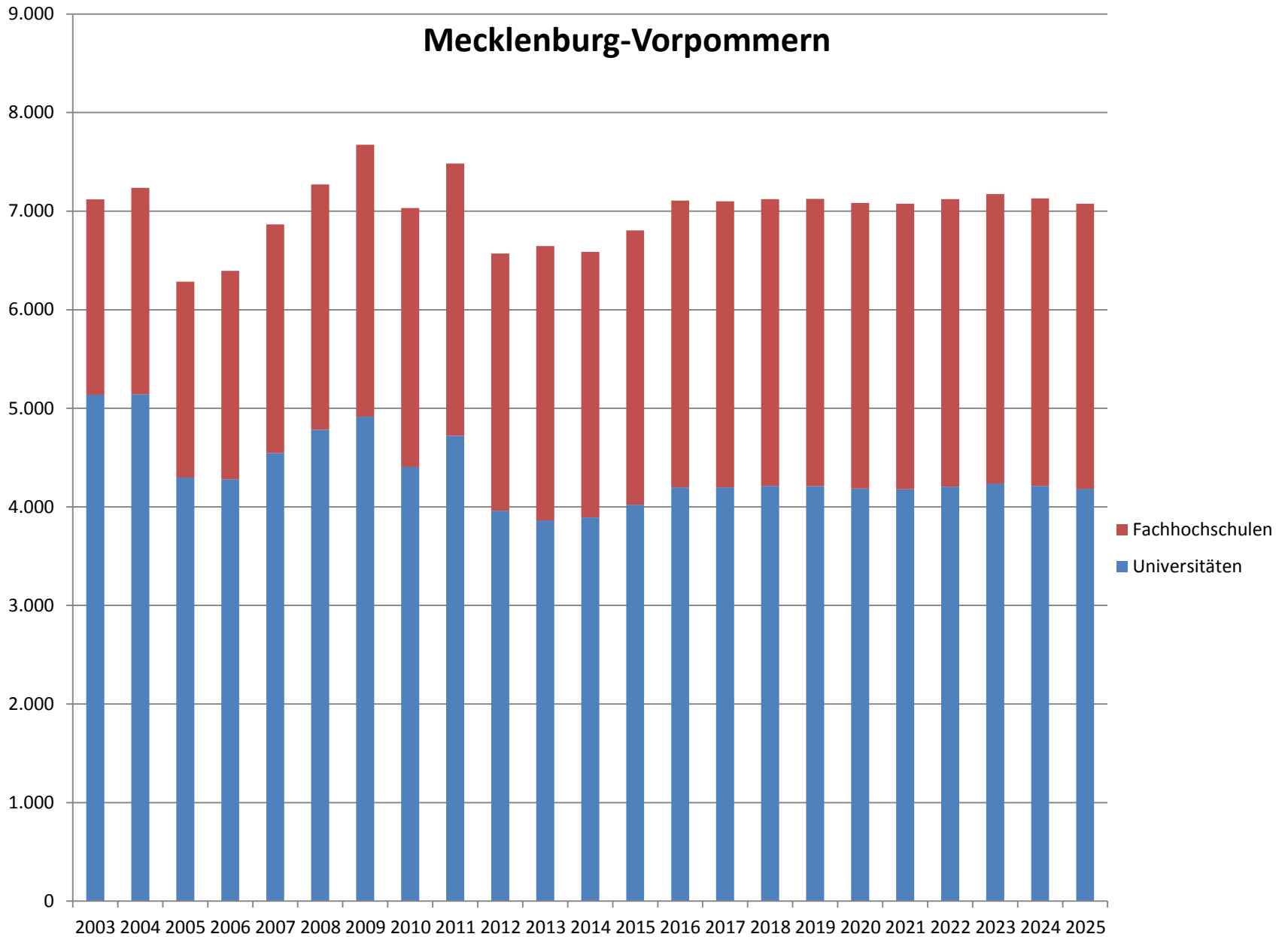
Hamburg



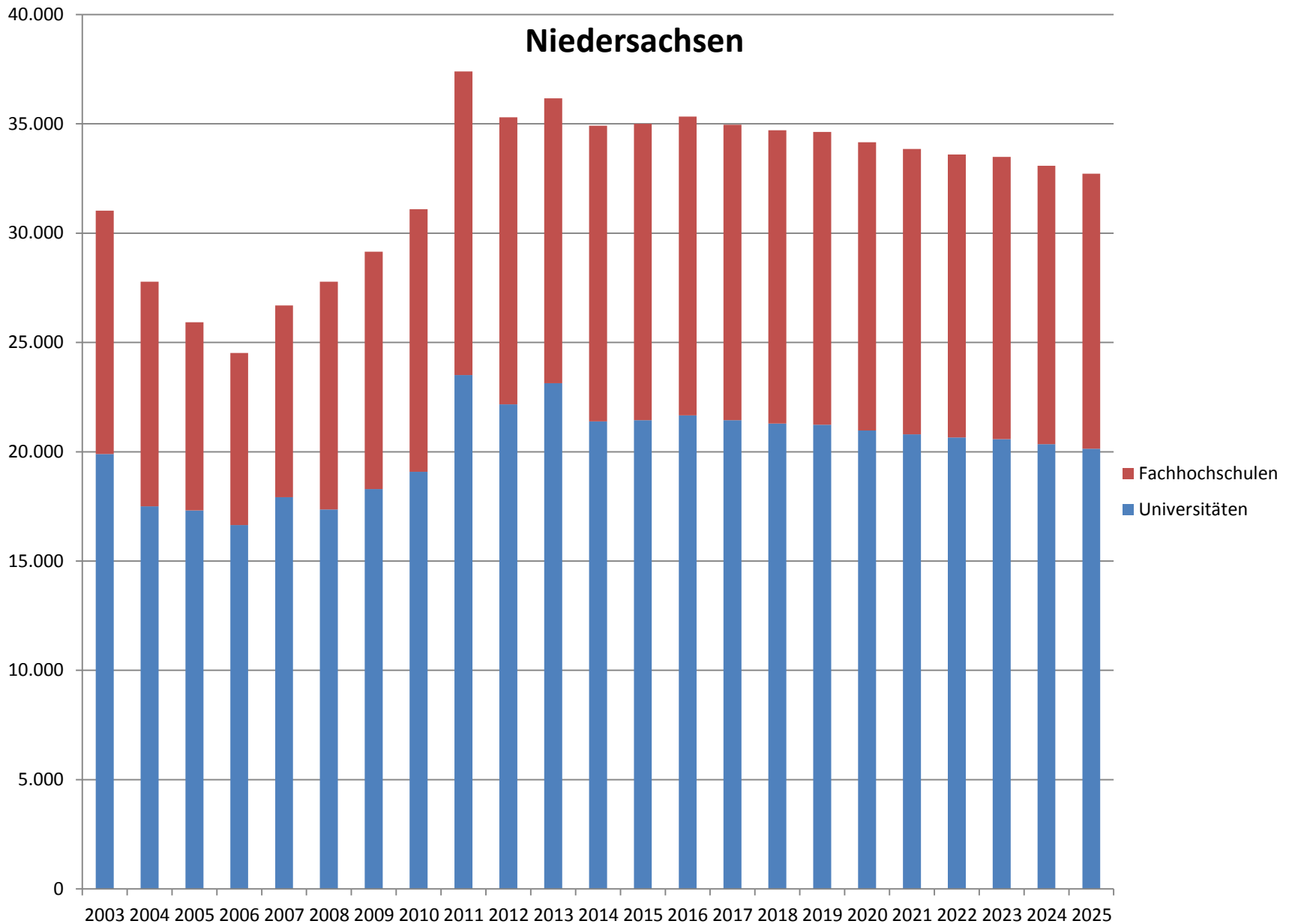
Hessen



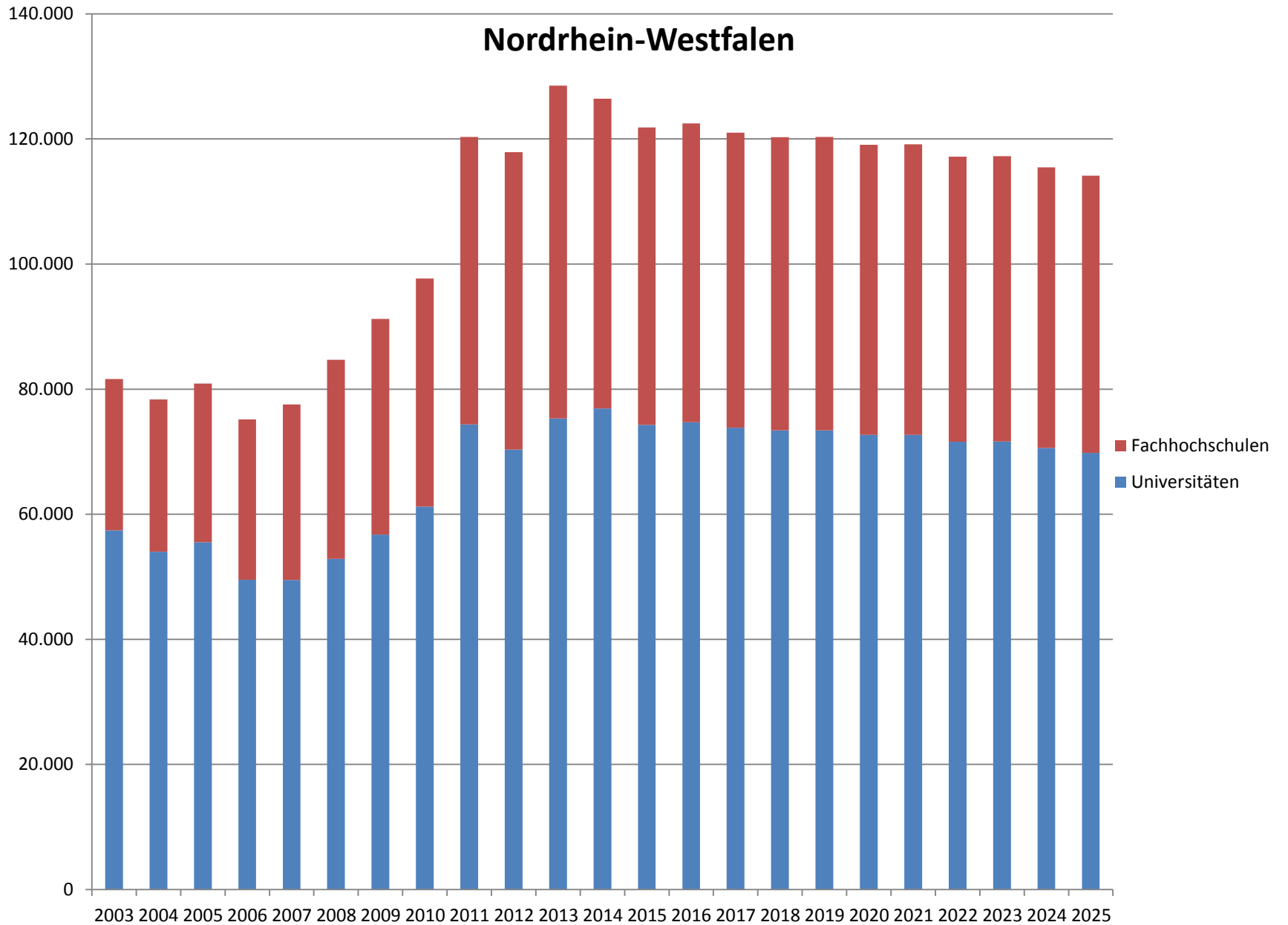
Mecklenburg-Vorpommern



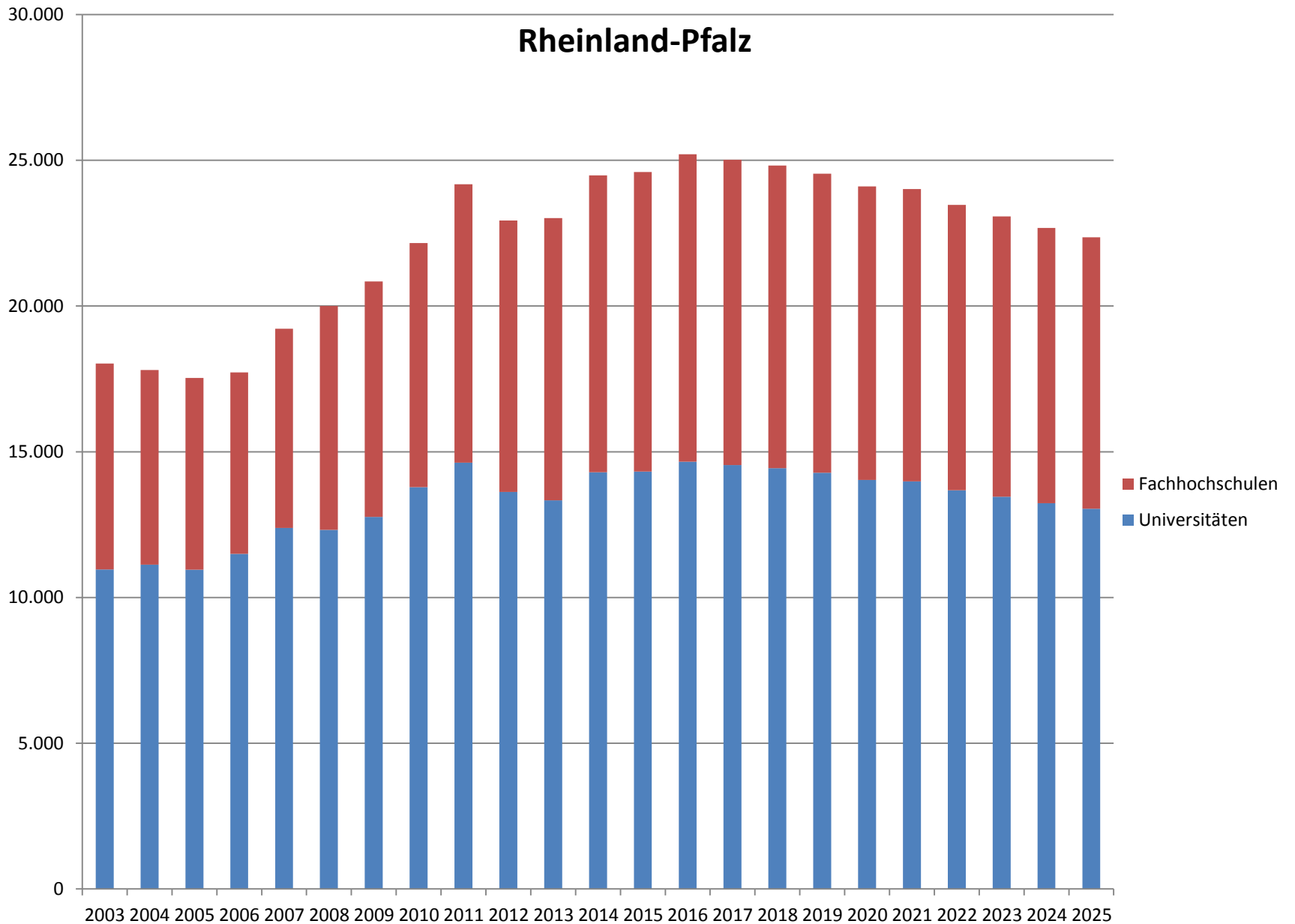
Niedersachsen



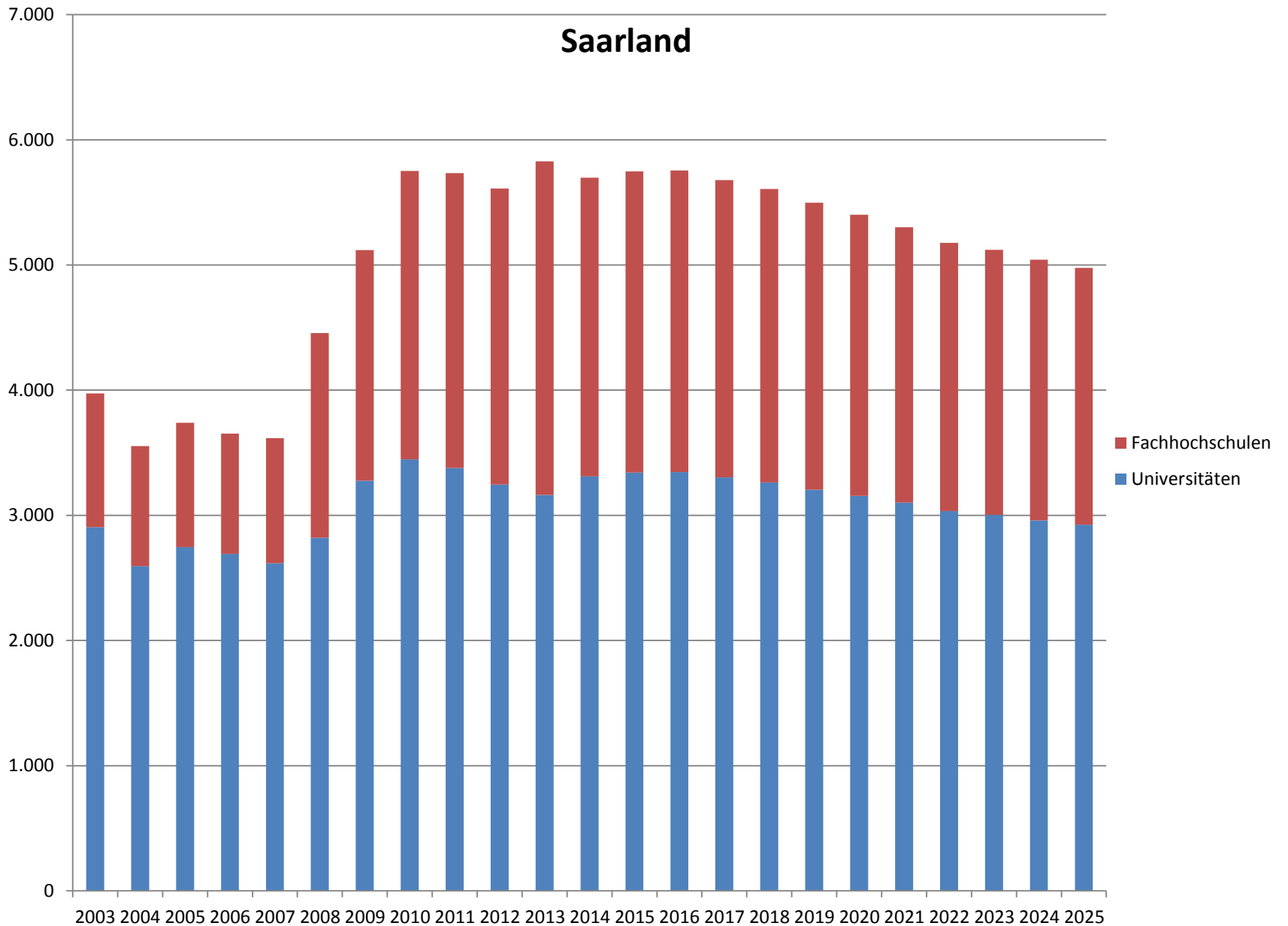
Nordrhein-Westfalen



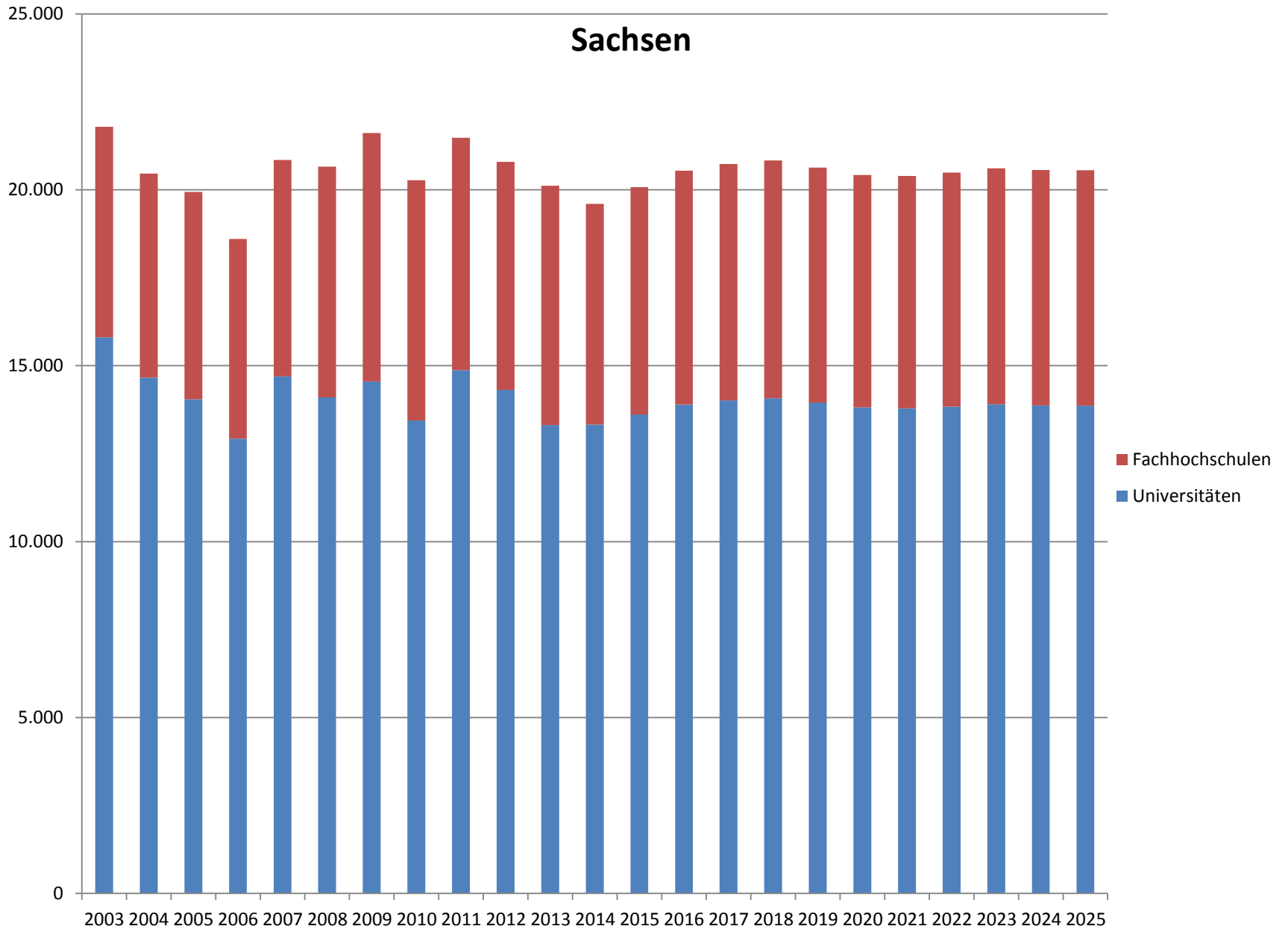
Rheinland-Pfalz



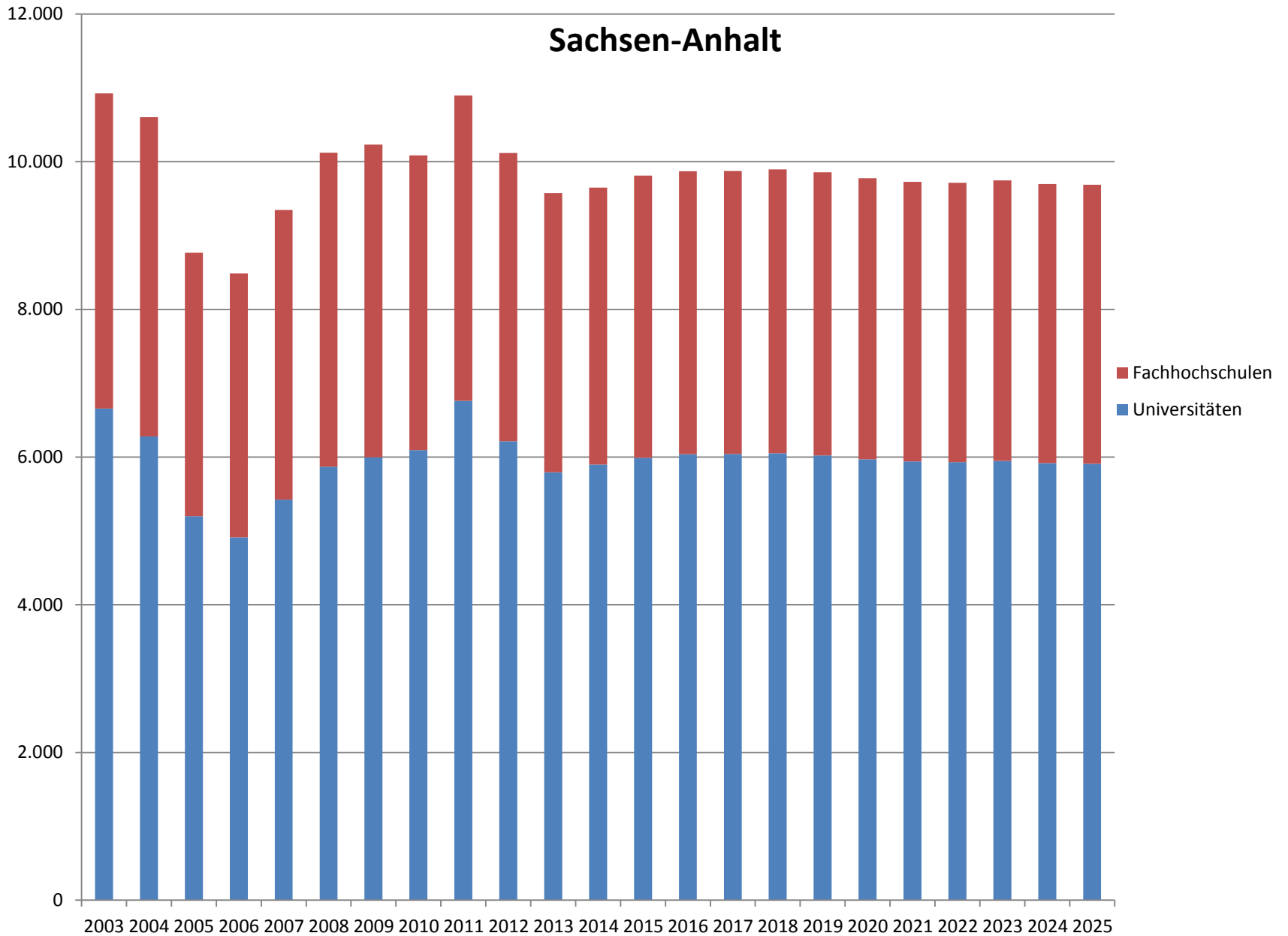
Saarland



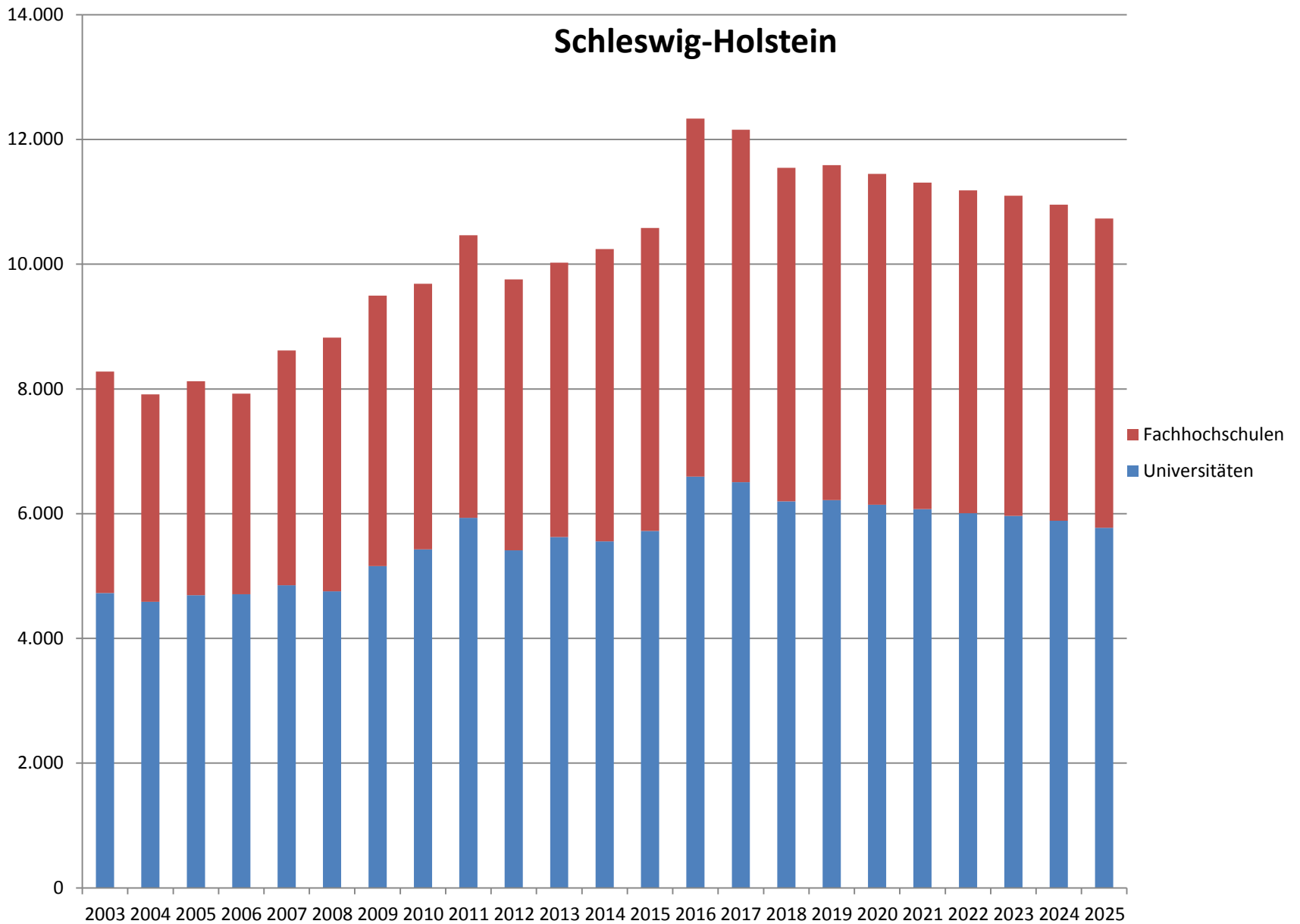
Sachsen



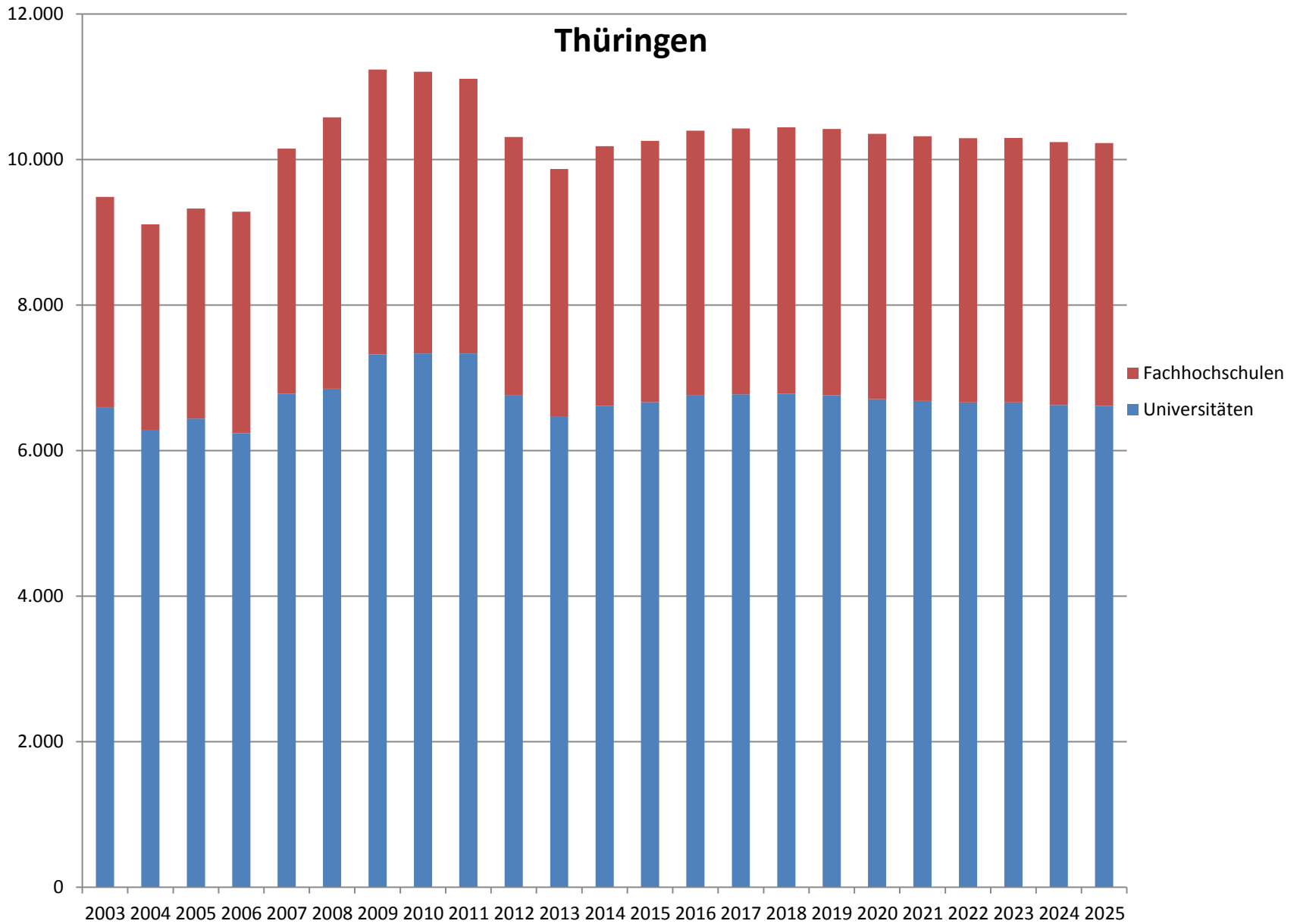
Sachsen-Anhalt



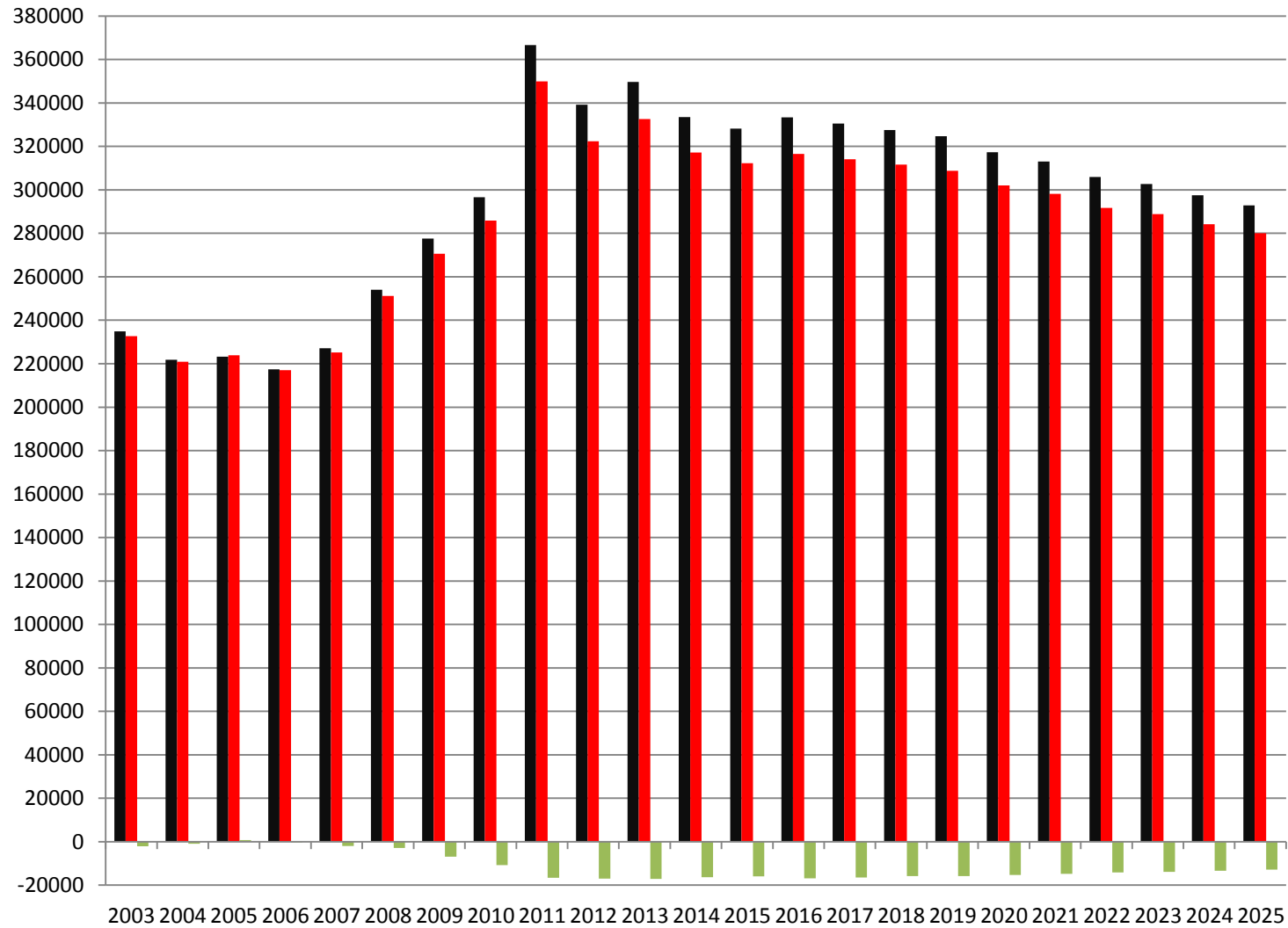
Schleswig-Holstein



Thüringen



Westdeutsche Flächenländer

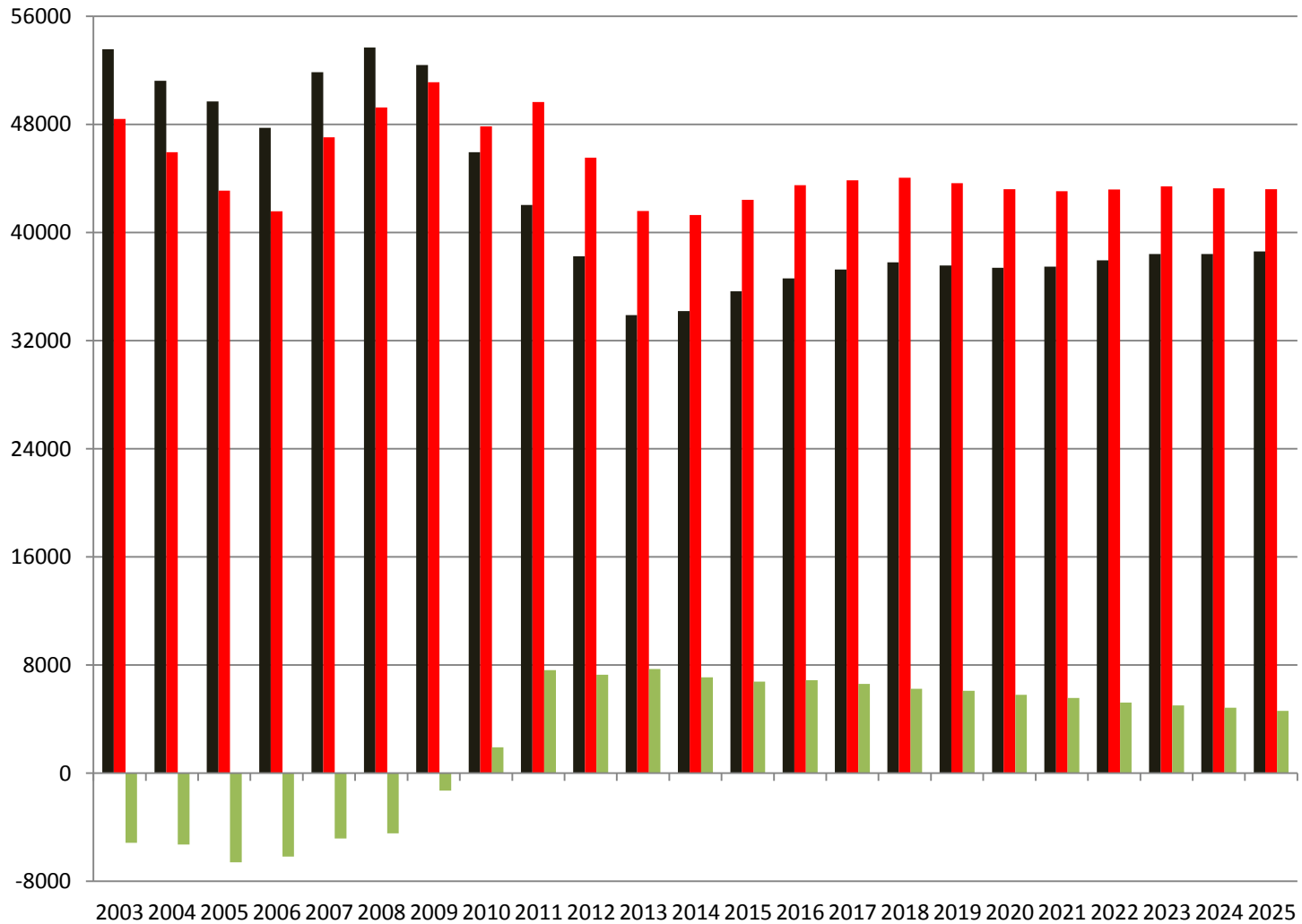


■ Vor Wanderung

■ Nach Wanderung

■ Saldo

Ostdeutsche Flächenländer

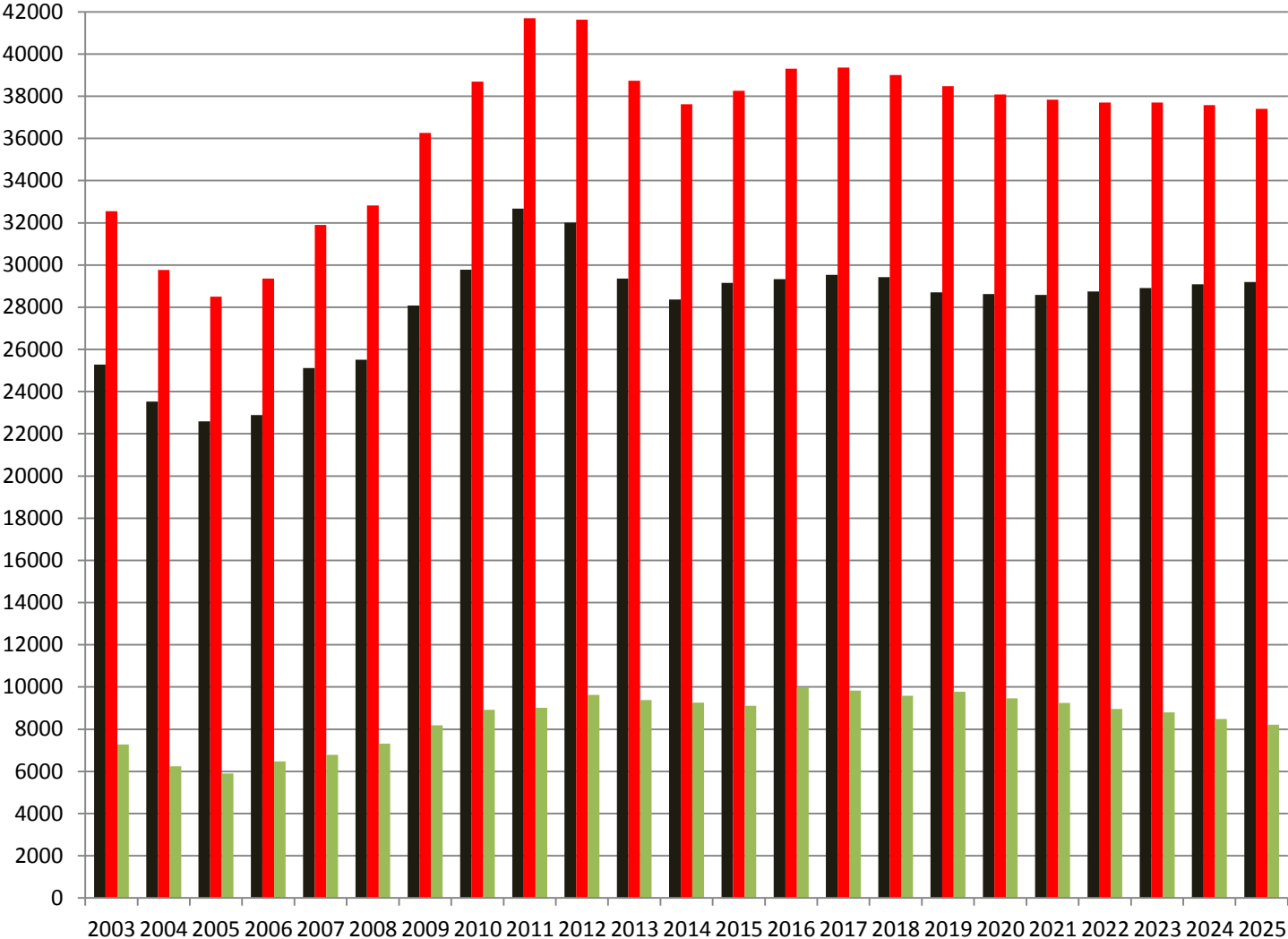


■ Vor Wanderung

■ Nach Wanderung

■ Saldo

Stadtstaaten

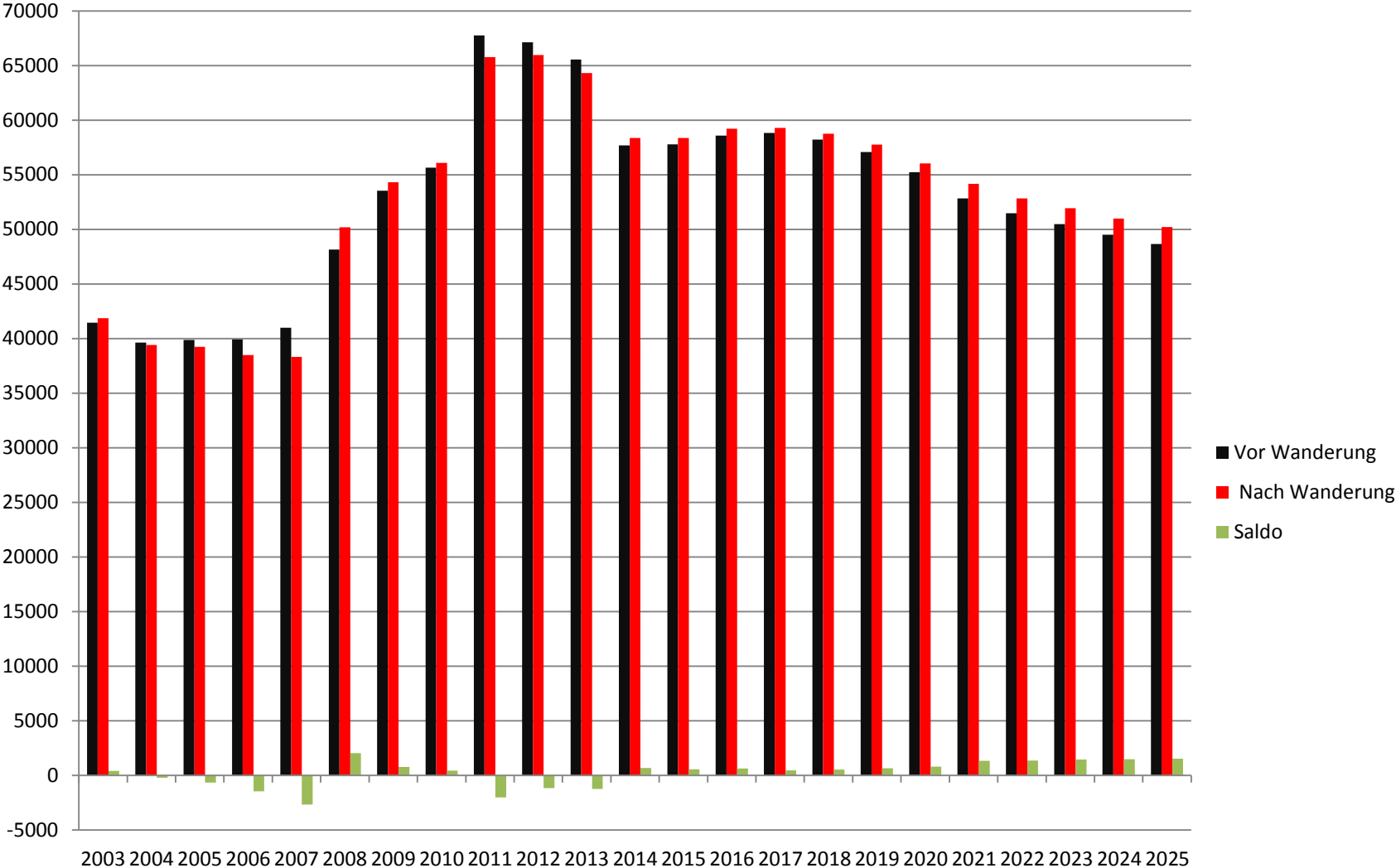


■ Vor Wanderung

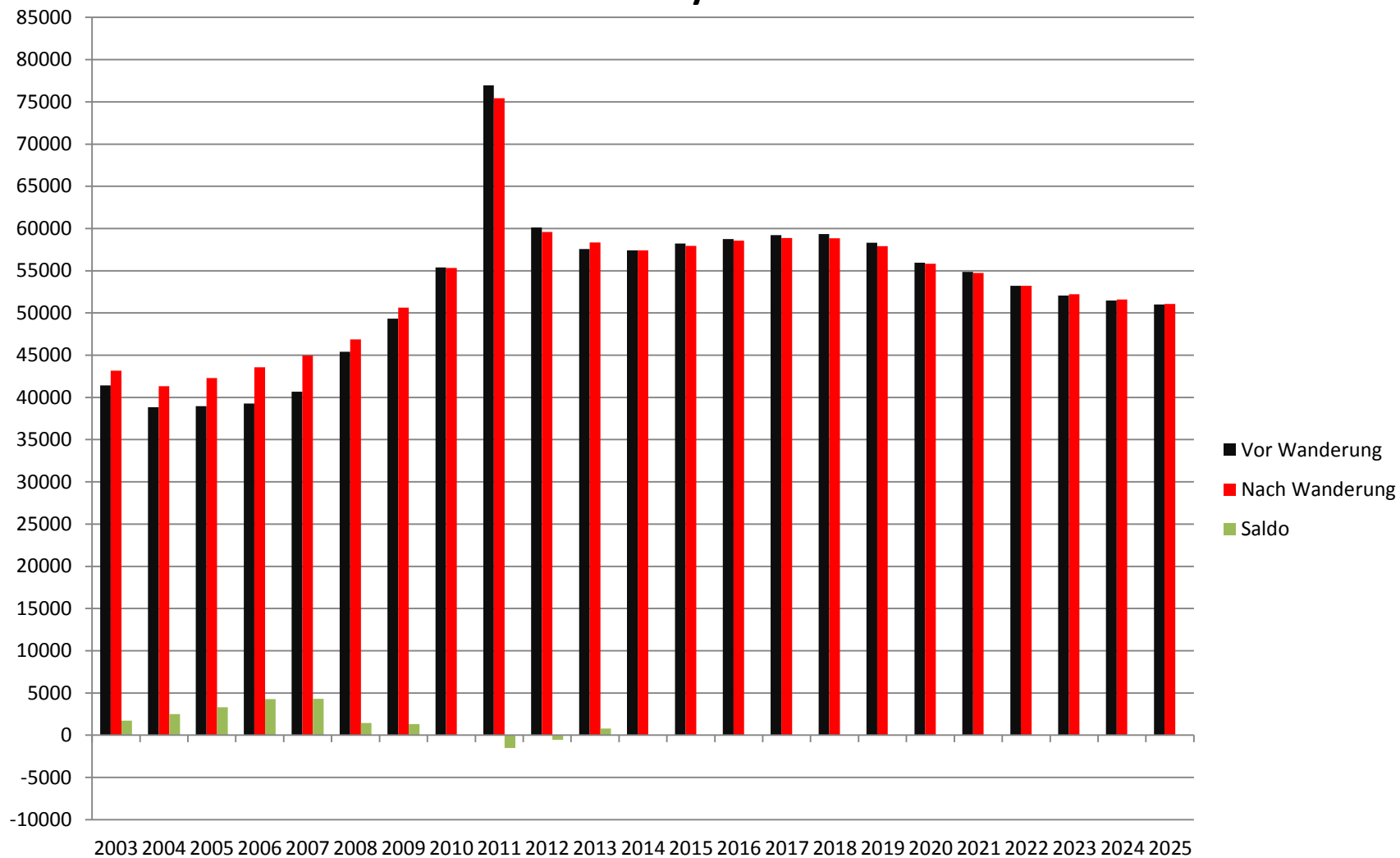
■ Nach Wanderung

■ Saldo

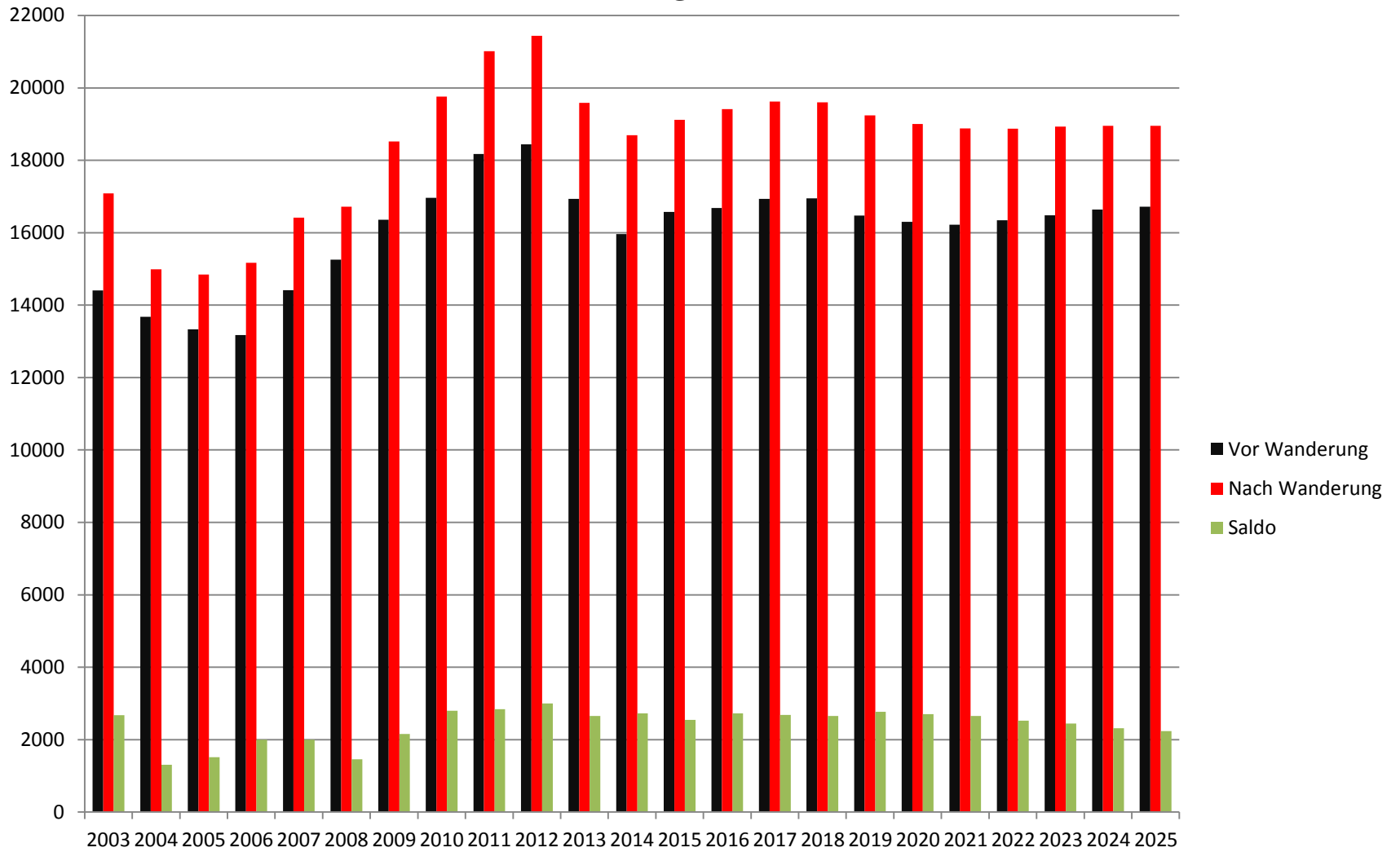
Baden-Württemberg



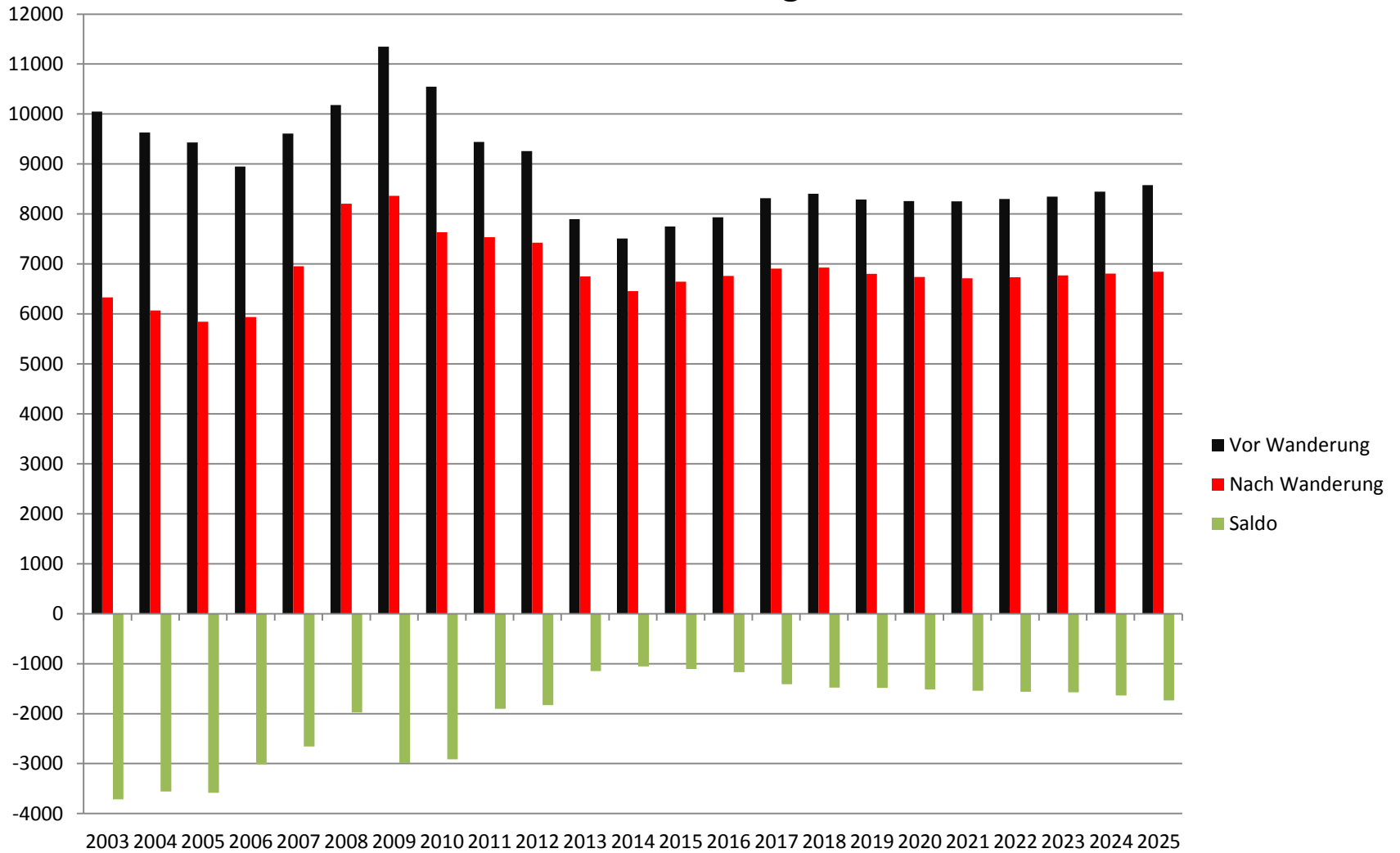
Bayern



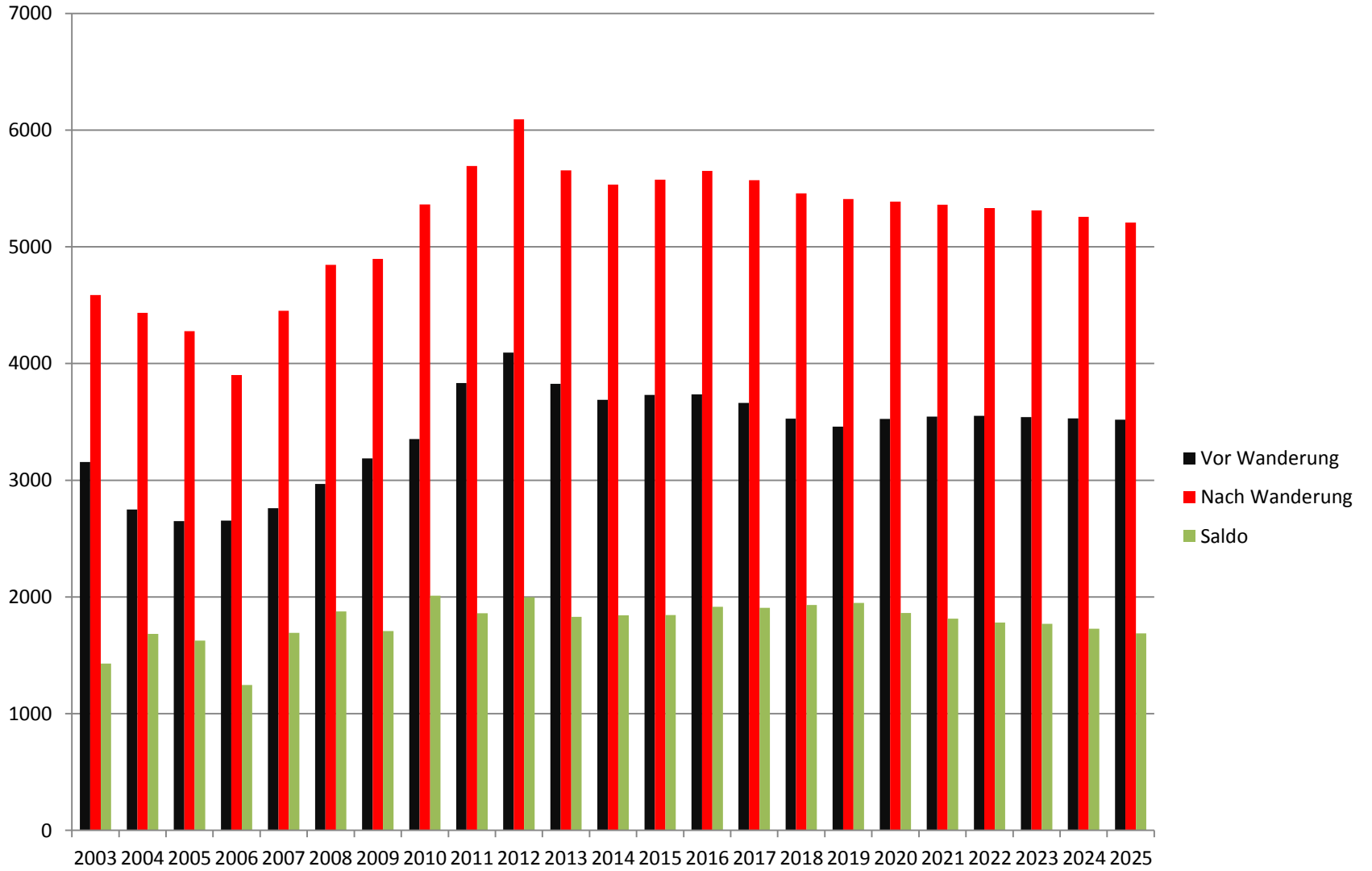
Berlin



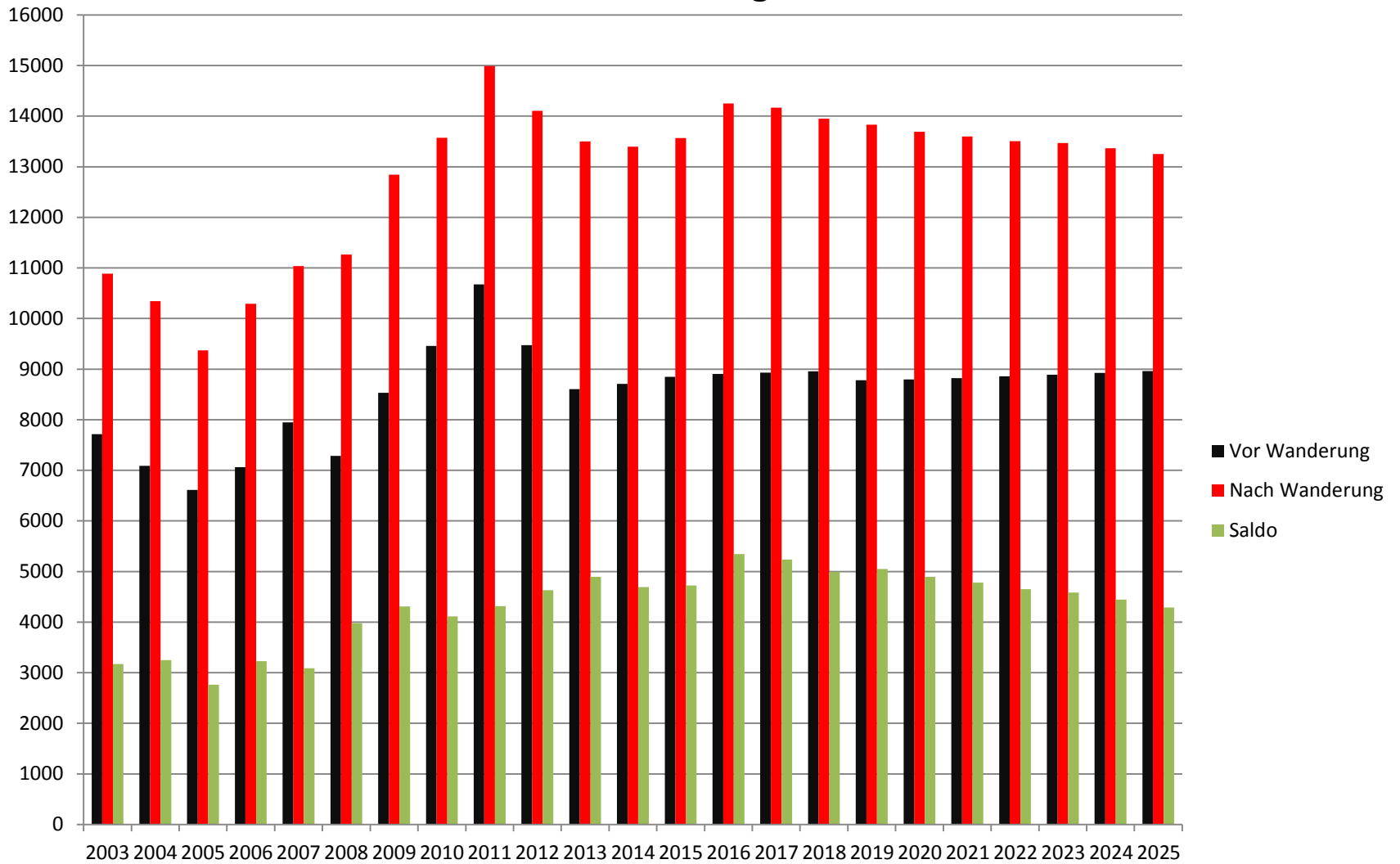
Brandenburg



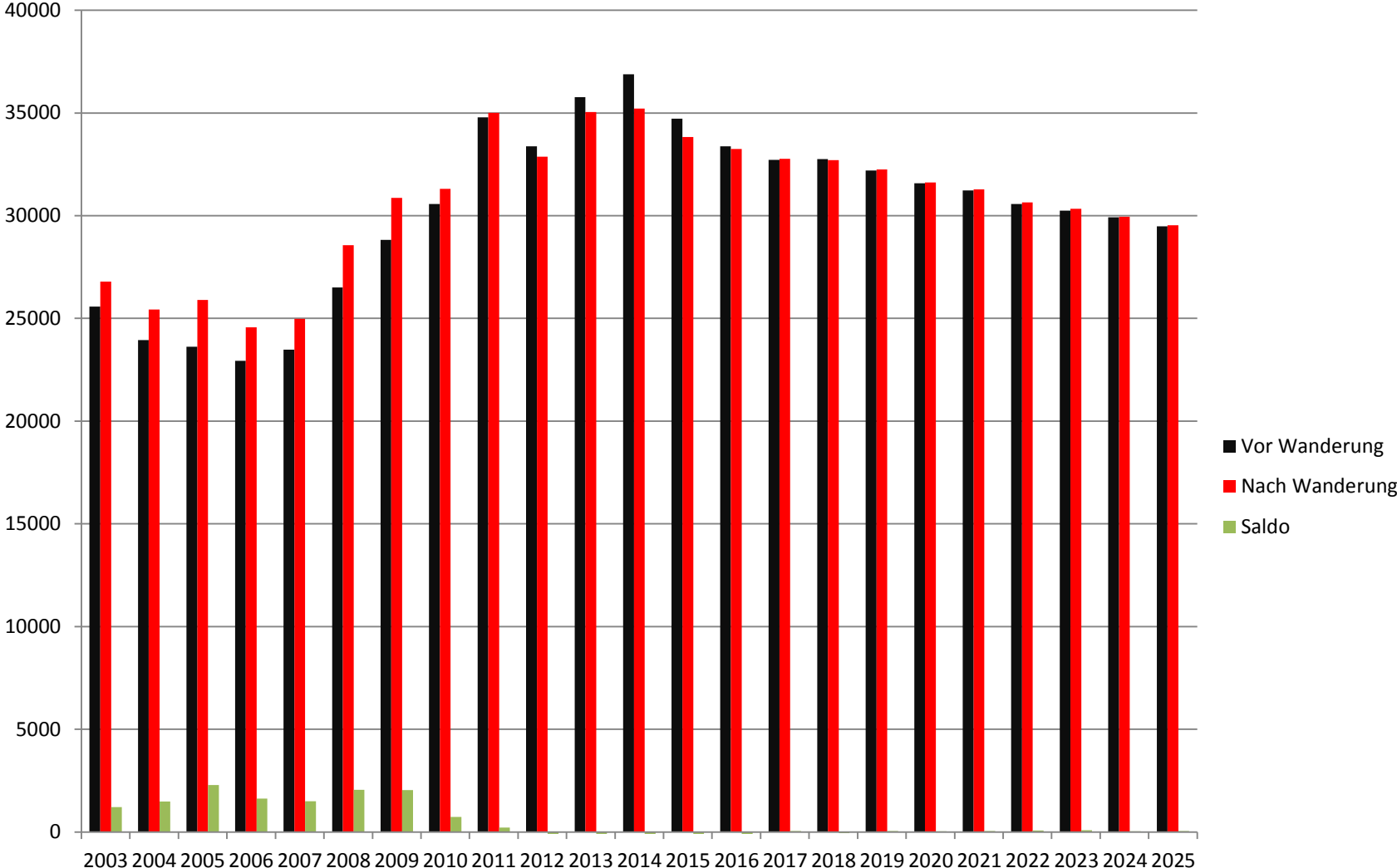
Bremen



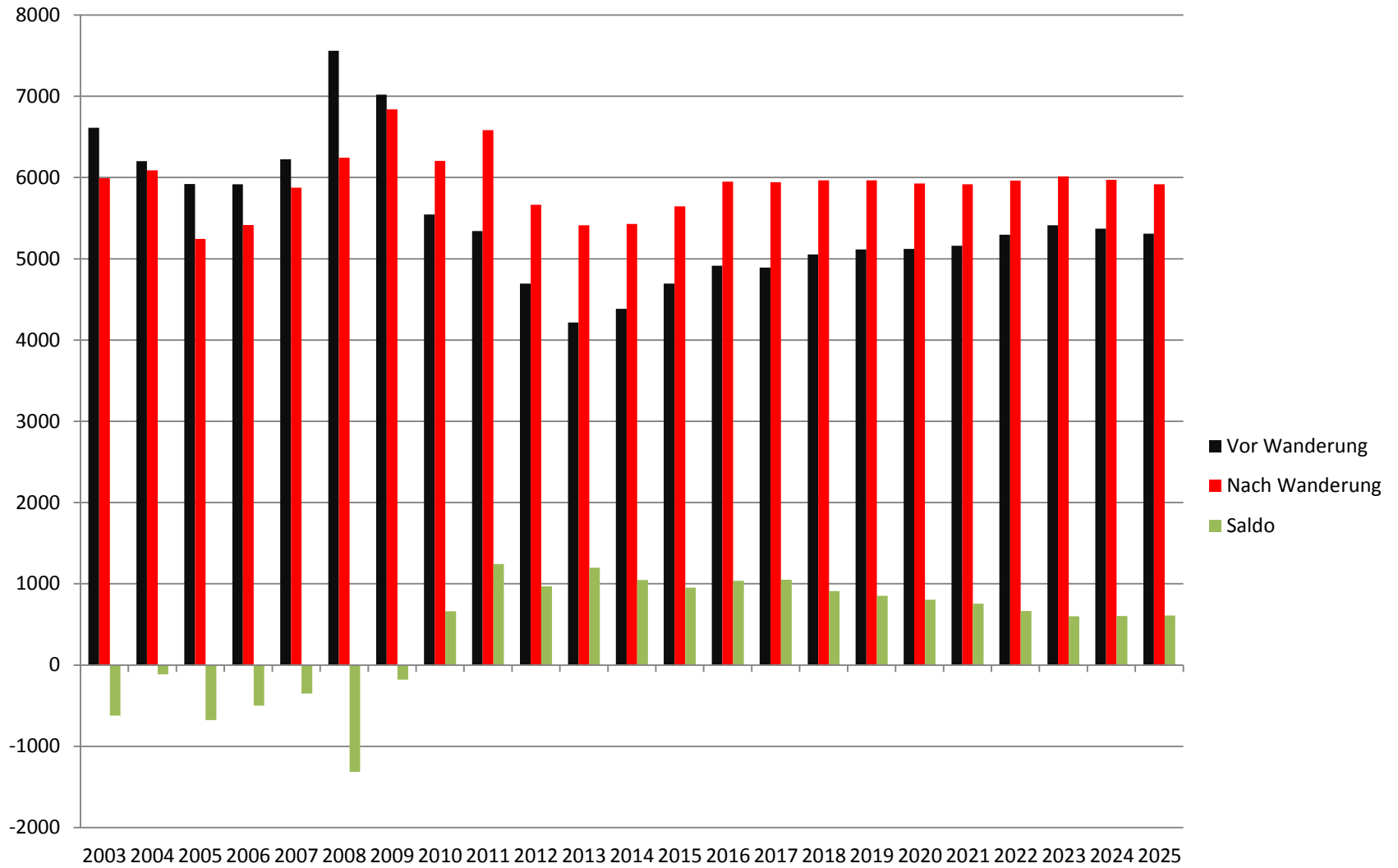
Hamburg



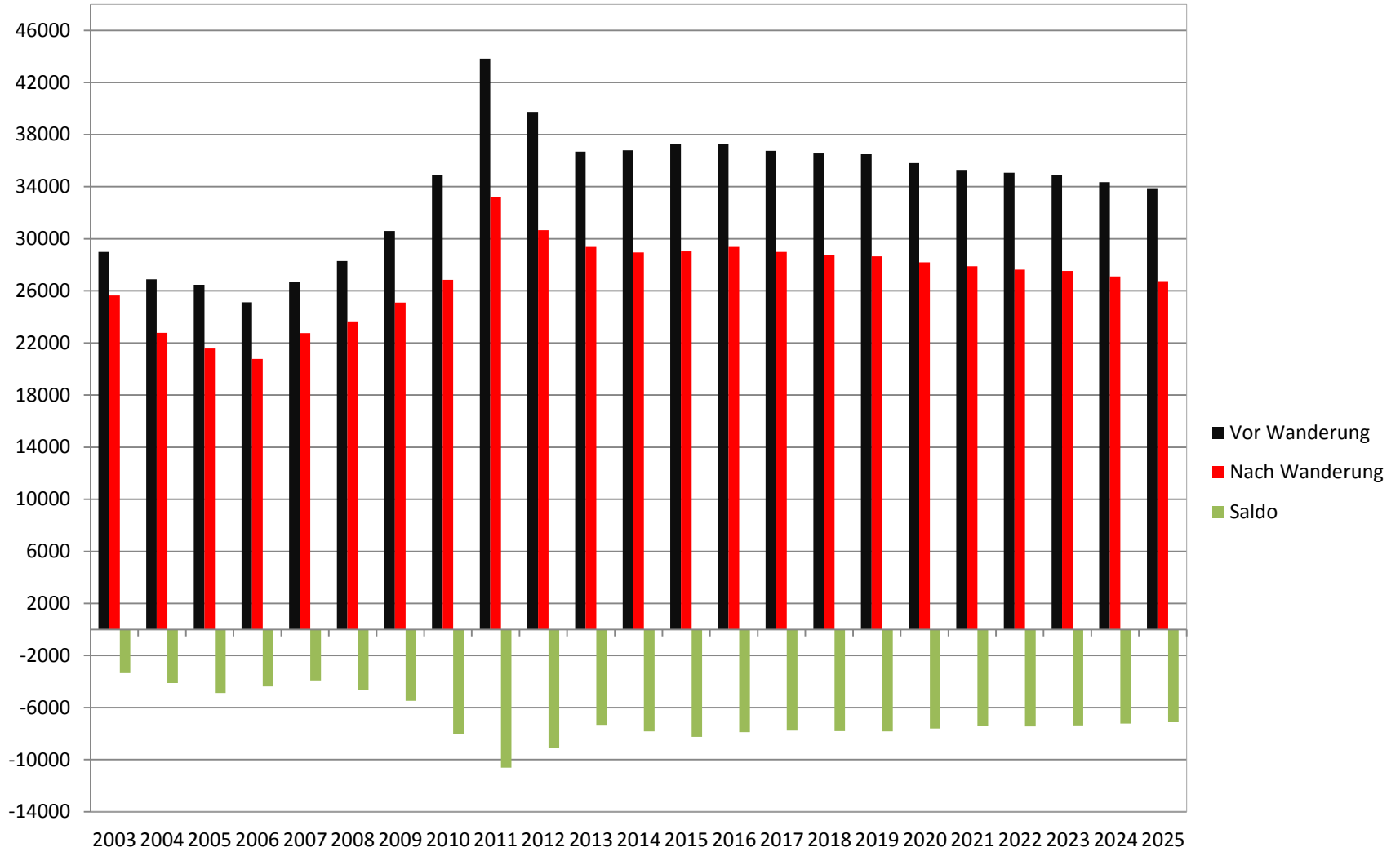
Hessen



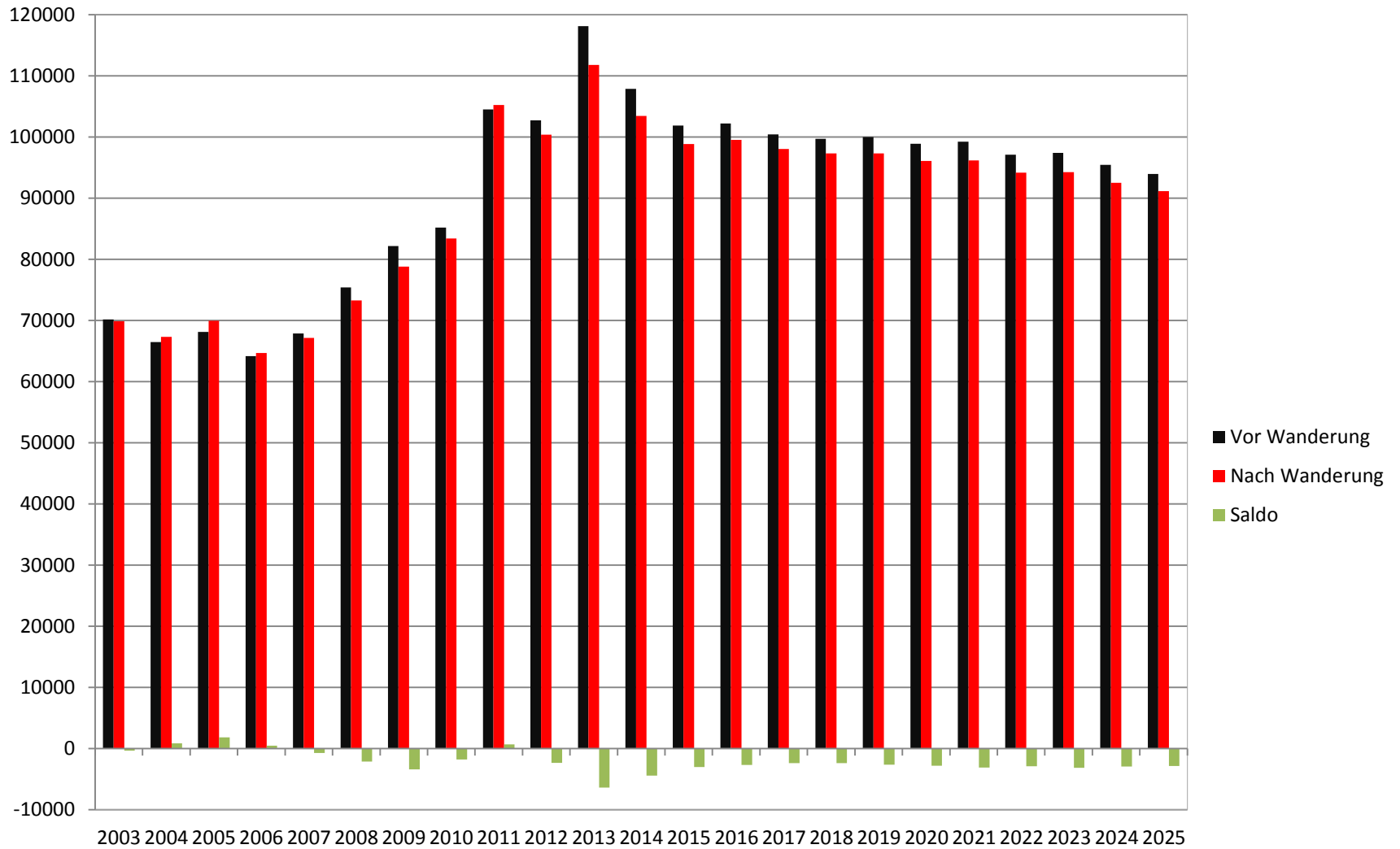
Mecklenburg-Vorpommern



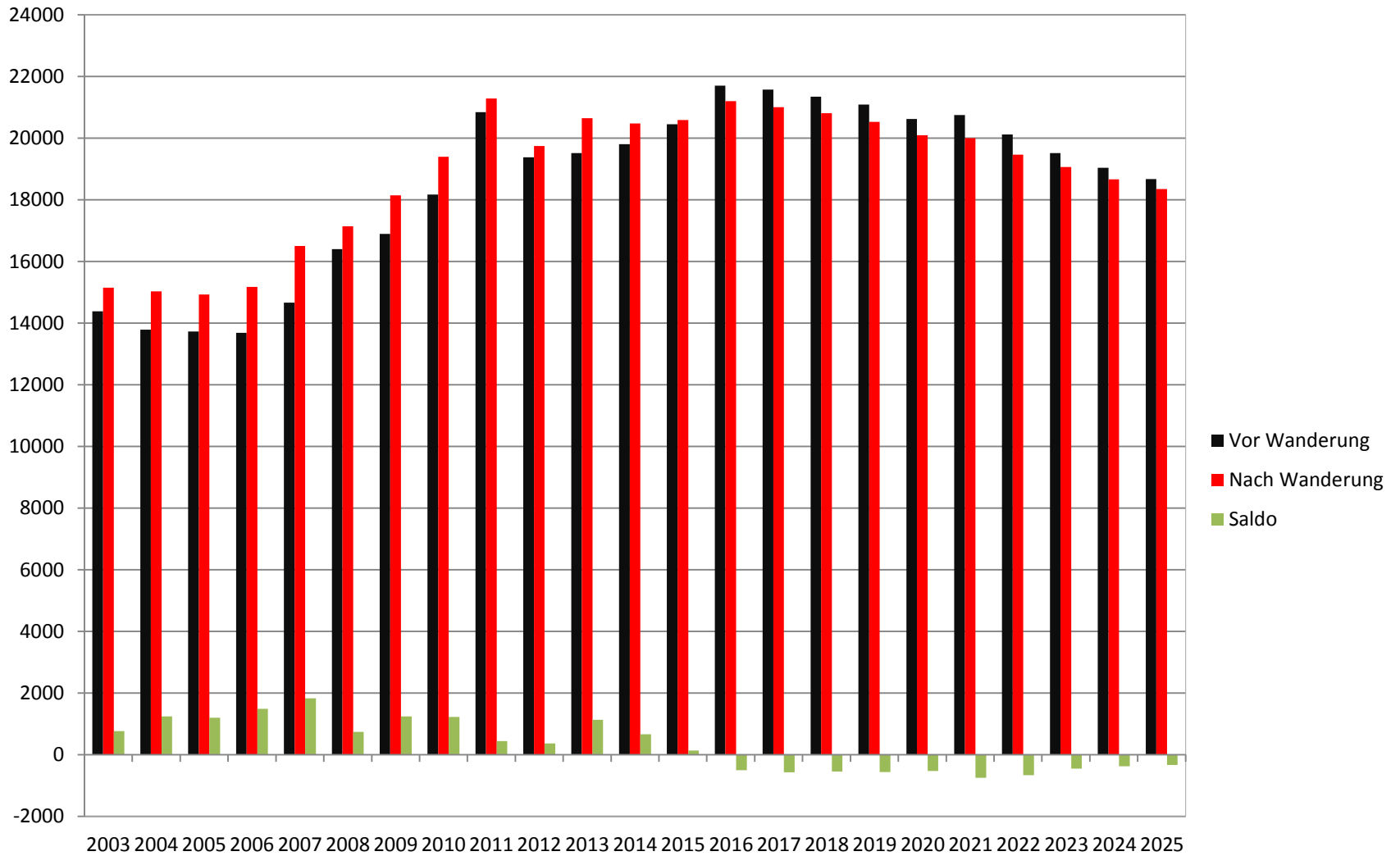
Niedersachsen



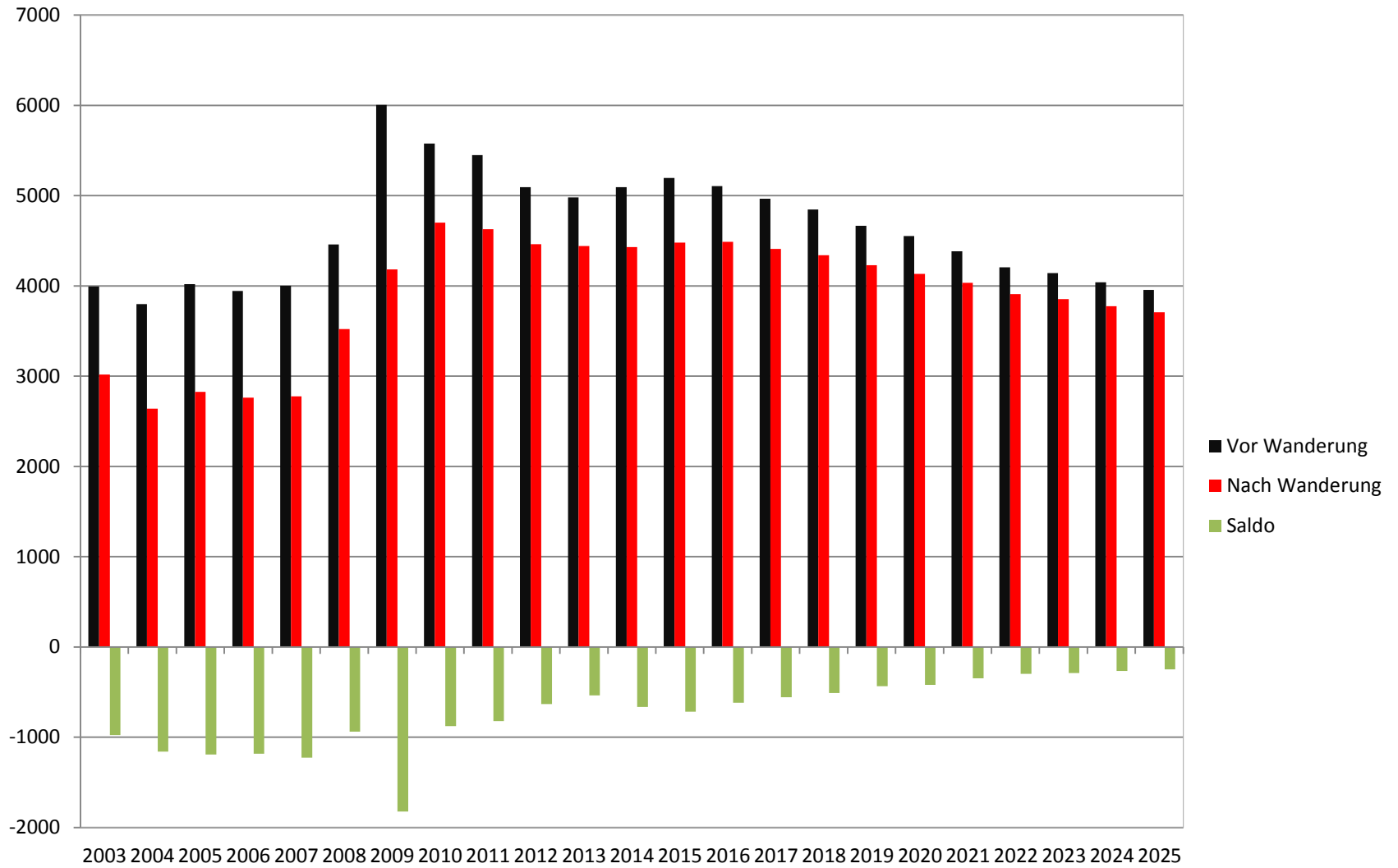
Nordrhein-Westfalen



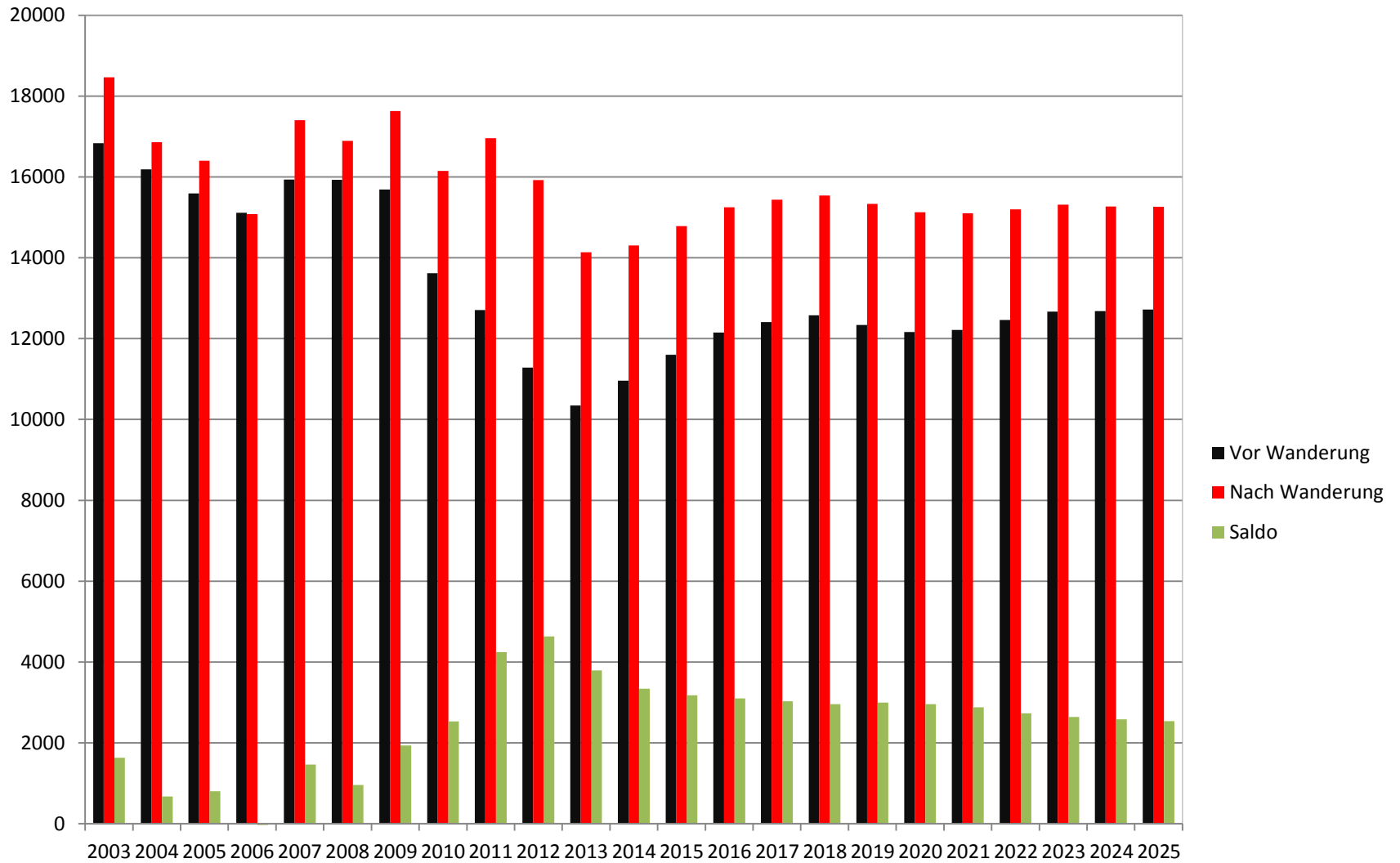
Rheinland-Pfalz



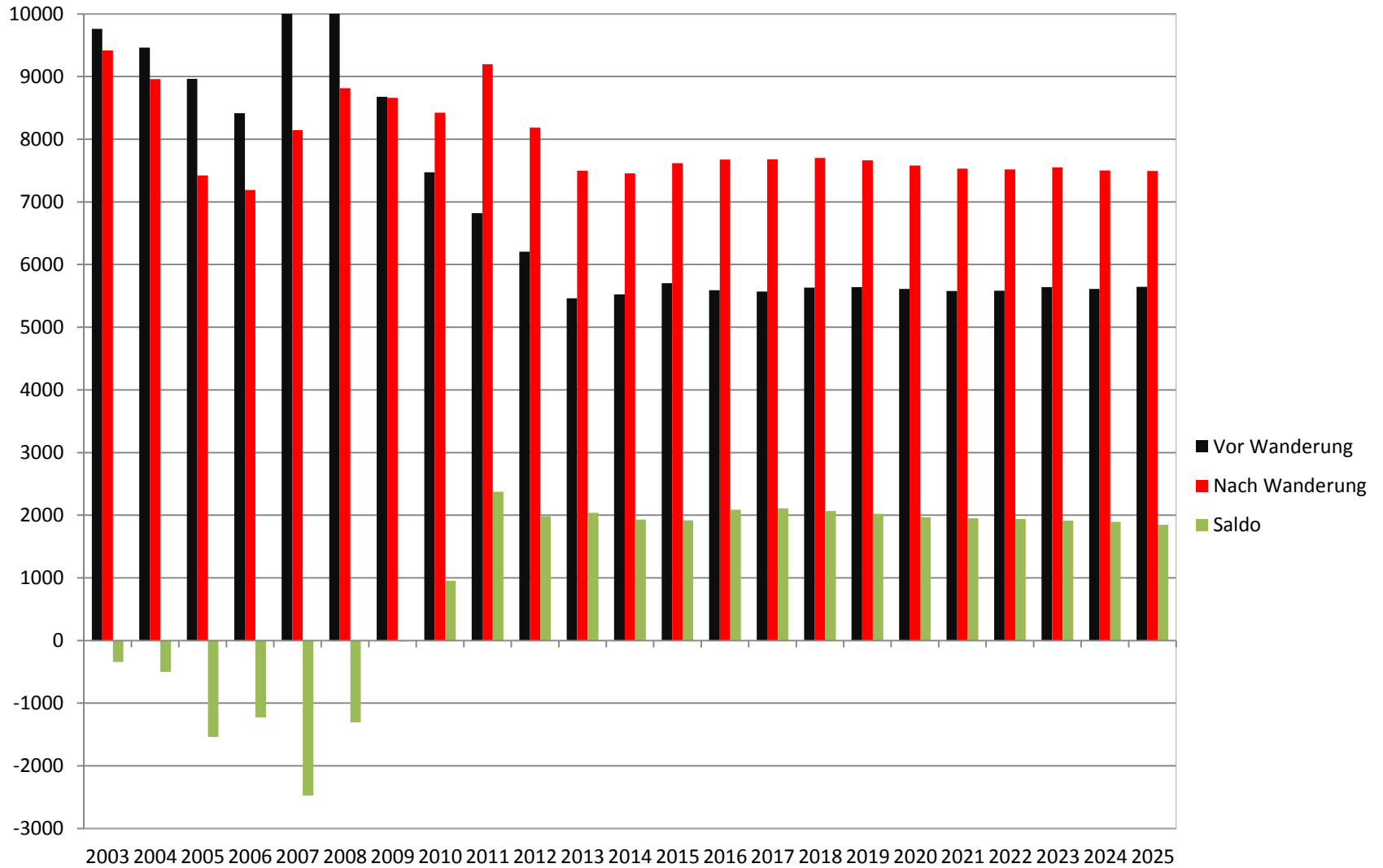
Saarland



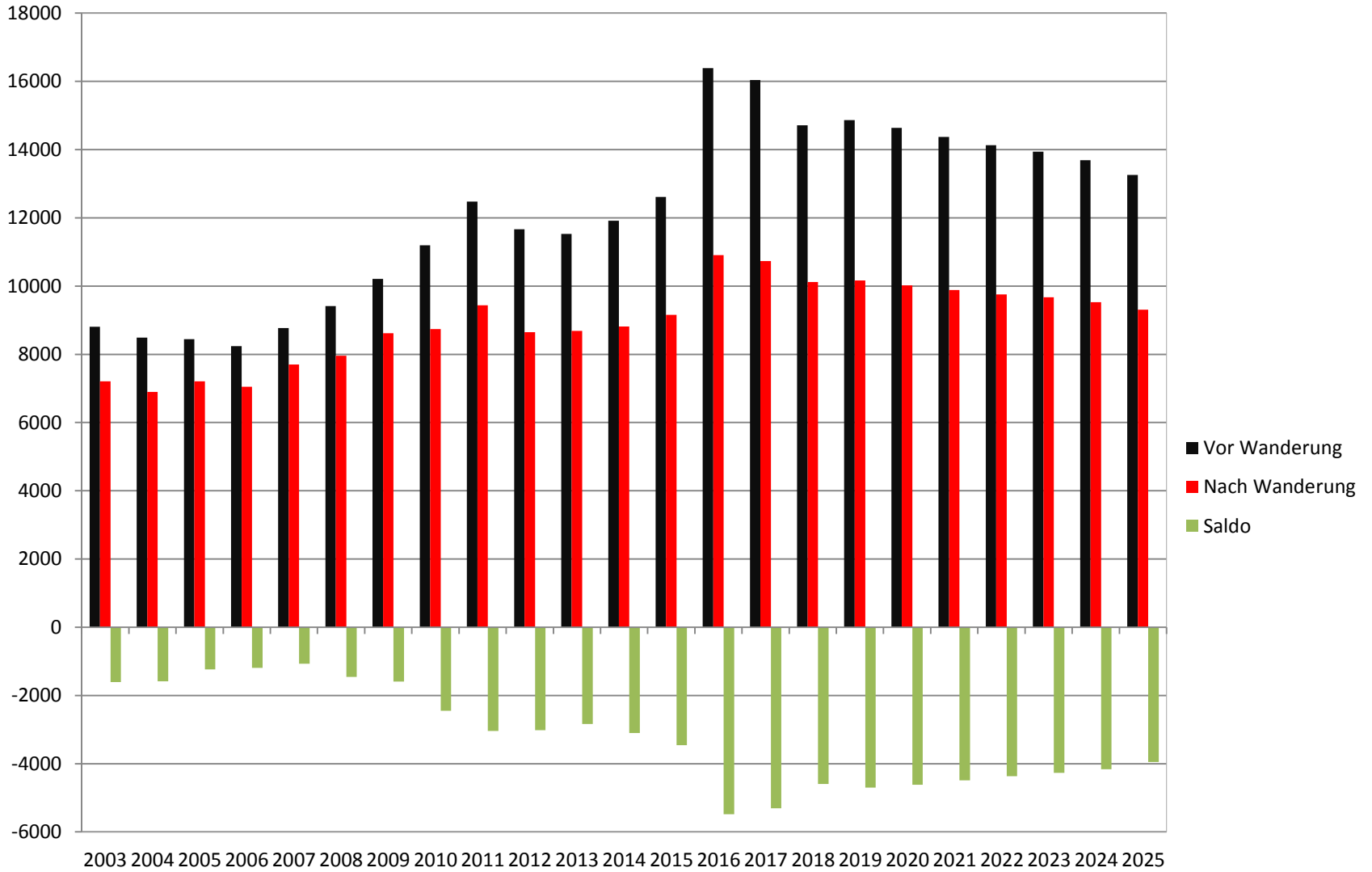
Sachsen



Sachsen-Anhalt



Schleswig-Holstein



Thüringen

